

FALL AND WINTER 2024

NEW THIS YEAR

*Adult Recess
Community Talent Show
Free Play Clubs*

SAVE THE DATES

*Touch-a-Truck Oct 19th
Middle School Halloween
Dance Fri Oct 25th
and many more...*



REGISTRATION INFORMATION
Fall and Winter 2024

Resident Registration Starts:
August 28th
Non-Resident Registration
Starts: August 28th

Register online at:
newburyportma.myrec.com

New department website
cityofnewburyport.com/rec



REGISTRATION POLICIES & PROCEDURES:

- Register on-line at <https://newburyportma.myrec.com> or at the office located at City Hall.
- In person registration can be paid for with a check (written to Newburyport Recreation) or cash.
- Returned checks will be charged a fee per City of Newburyport policy.
- Recreation and Youth Services reserves the right to correct or modify program information due to errors, omissions, or changes. Errors can happen in printing so please check our website for the most current information/corrections/changes before registration.
- Fees listed in the brochure are for City of Newburyport Residents and Non-residents. Resident fees are noted as "R".
- Non-resident fees are noted as "NR". Non-residents pay an additional 10% of the program cost (minimum is \$10). This rate may be waived in an effort to increase registration or on one day programs/ events. The department reserves the right to give priority to residents.
- Program deadlines are usually set for 2 weeks prior to the program start. After this date there may be a \$15 late fee applied.
- Late Registrations: Programs will generally not be prorated if registering within the first 2 weeks of the program start date.
- Most Newburyport Rec programs are self-sustaining through user fees, for more information on pricing, see our cost recovery policy on our website.
- Age requirements: Children must be the required age or grade by the start date of the program.
- All participants are required at registration to complete emergency information. This includes medical and behavioral information as well as emergency contacts and a liability waiver. *See Therapeutic Rec Policies for information about special needs.
- Liability: Participants agree to forever release the City of Newburyport from any and all claims from participation in the City's voluntary programs. A complete liability statement is on file at Newburyport Rec.
- Photo Permission: Participants in sponsored activities permit to the taking of photos and videos of themselves and their children for publication both digital and print, as the City deems necessary.

RECREATION POLICIES

Financial Assistance: We would like to make these programs accessible to all of our city's residents. Please contact us if you need financial assistance. Payment plans and scholarships are available.

Behavior standards: The following standards are set to ensure that all participants can have an enjoyable time while participating in the programs and activities listed in this book.

It is unacceptable behavior to use profanity or other inappropriate language; to be disrespectful to program staff and other participants, or show non-compliant behavior; to cause intentional damage or defacing of property; to cause continuous disruptive behavior to classes or programs; or to exhibit any aggressive act (hitting, kicking, biting, etc.) which is initiated or in retaliation. Temporary removal or permanent suspension from the program and/or facilities may result if behavior standards are not maintained.

Special Needs: We are committed to ensuring that our programs are inclusive and accessible to all. We offer a Therapeutic Rec Membership to any individuals with special needs or accommodations. The membership provides us with an opportunity to learn more about what you or your family need in order to enjoy our programs. Please complete the free membership on newburyportma.myrec.com.

Confirmation: Your registration receipt is your confirmation. You will receive a program reminder or "Know Before you Go" email two weeks prior to the start of the program. Department staff may contact you two weeks prior to let you know if the program has not met its minimum or is being cancelled.

Confidentiality: You and your family's forms are confidential and are shared only with program staff. Class rosters are not confidential, often families would like to know if their child will have any friends in the program, for this purpose we do share rosters. When you provide your email to us for registration, it is automatically added to our email mailing list. It is not given out to any other organization.

PROGRAM CANCELLATION POLICY

Withdrawals: Participants withdrawing are asked to give notice at least two weeks prior to program start date. A participant who withdraws at least two weeks prior to the class start date will be given a refund, minus a \$10.00 administration fee. You can transfer to another program for no charge.

Refunds: In the event Newburyport Rec cancels a program, a complete refund will be made.

Location of classes and/or fields is subject to change. This is out of the hands of the City and there will be no refunds for class location changes. Refunds are not given for weather cancellation of less than 25% of the program time and only then if make-ups cannot be offered. Refunds are not given for special events involving ticket purchase or if the department has incurred an expense on your behalf. There are no refunds for missed classes.

Cancellations after the session starts:

If you are unhappy with a program after the first session, please contact us right away to discuss withdrawing and receiving a refund.

A prorated percent of the class fee plus a \$10.00 cancellation fee and any direct program material costs will be refunded unless the program is cancelled by the Recreation Department or a physician's excuse is presented. No refunds will be issued after the 3rd week of the session or halfway through the class, whichever comes first.

Refunds can be credited to your Household account, back to the original credit card, or a check will be issued. Refund checks will be issued approximately within thirty days after notification of cancellation.

Weather Related Cancellations: Programs do not run if Newburyport Public Schools are cancelled. Summer programs may be cancelled due to inclement weather or extreme heat. The City reserves the right to cancel due to dangerous weather. Cancellations are sent via email through the myrec registration program. If possible, make-ups will be offered.

Enrollment Cancellations: Recreation and Youth Services reserves the right to cancel any program due to under-enrollment or unforeseen circumstances.

On the Cover:
Weston enjoys a day at the Clipper playground Program this summer.
Photo by Keenan Jackson - kjcineomatics.com

Letter from the Director

Dear Friends,

As the colors of fall begin to appear, we are excited to welcome you to another season of fun, community, and growth with our Fall Recreation Programs. This time of year is always a favorite, filled with opportunities to reconnect with nature, explore new activities, and build lasting friendships.

Whether you're looking to stay active through our wide variety of classes, explore a new hobby, or simply enjoy a favorite event, we have something for everyone. From youth sports to outdoor adventures, and community and family-friendly events, our dedicated team has worked hard to craft a schedule that offers something for all ages and interests.

In addition to our regular lineup, we are thrilled to introduce some exciting new programs this fall and winter. Including a Community Wide Talent Show and Adult Recess! Our goal is to foster a sense of belonging and provide meaningful experiences that enhance both physical and mental well-being.

We are deeply grateful to the families, volunteers, and community members who continue to support our efforts. Your participation not only strengthens our recreation program but also builds a stronger, more connected community.

We look forward to seeing you at one of our activities this season! Let's make this fall one to remember- and as always, please let your kids look through, they may surprise you!

Warm regards,
Andi Egmont
Director of Youth and Recreation Services

ACTIVITY GUIDE DIRECTORY

Memberships	8
Services & Supports	10-13
Certification/Training	14
Family and Community Rec	15-17
Events	18-21
Adult Rec	22-23
Preschool	24
Children's Rec	
Sports & Fitness	25-26
Early Release Days	26
Film/Acting	27
Therapeutic Rec	28
Horsemanship	29
Cooking and baking	29
Arts & Crafts	30
STEM & Nature	30-31
Youth Programs (Gr 6-12)	33-38
The Spot	33
Groups	34-35
Programs	34-38
Events	38

CONTACT INFORMATION

Office:
City Hall
60 Pleasant Street
2nd Floor

Office Hours:
Mon-Thur 9am-3pm
Friday 8am-Noon

**Due to the nature of our work,
we are often at programs.
Please email or call ahead.**

978-465-4434

General email:
youthservices@cityofnewburyport.com

Register online at:
newburyportma.myrec.com

New department website
cityofnewburyport.com/rec

Meet the Team



Andrea Egmont, Director



Lee Gordon, Associate Director,
Youth Programs



Joe Pauline, Associate Director,
Rec and Enrichment



Tina Los, Associate Director,
Services and Supports



Tarah Luciano,
Program Coordinator, NLEC



Trish Boateng (LSW),
Supports Coordinator

Emma Michaud, Activities Coordinator,
Rec and Enrichment

Meghan Meagher, Activities Coordinator,
Youth Programs

Stacy Gisjbers, Office Manager/ Admin

Renee Miciek, Grant Admin Support

Follow us on Facebook @newburyportrec



The **Friends of NYS** are now the **PORT YOUTH AND REC FOUNDATION** with the same mission to provides fundraising and advocacy in support of the Newburyport Recreation and Youth Services department's programs and services.

Thank you to this year's Sponsor!



Parking lot opens at 6pm, Movie starts around 7:30pm
 Tickets available for sale through our facebook event
\$30/car Concessions available for purchase
facebook.com/friendsofnys

The Newburyport Recreation & Youth Services Department can't do what they do without superheroes like you!

We are recruiting volunteers & board members. Join us today!

Email us at info@portyouthrecfoundation



We have needs for all commitment levels and skill sets. We have a way for you to get involved!

- Attend community events to build awareness
- Advocate for a new Rec Center
- Assist with social media
- Join our board or a committee
- Assist with fundraising events

The Friends of NYS are now the PORT YOUTH AND REC FOUNDATION with the same mission to provides fundraising and advocacy in support of the Newburyport Recreation and Youth Services department's programs and services.

Therapeutic Recreation Membership

For families with individuals who have special needs. Please register your child(ren) and complete the TheraRec forms. This will enroll your family in our newsletter and updates for special events.

Accommodations or supports for inclusive participation in Recreation and Youth Services programs
Specialized programs
Family events and activities
Sensory Friendly Events
Newsletters with information from community partners

Cost: Free
Membership Type: Individual (All Ages)
Length: Annual

Family Club Membership

The Family Club Membership is designed to help connect and meet the needs of families with children under the age of 6 in the Greater Newburyport area.

Discounts on pre-school age programs
Playgroup Matching
Dads, Dudes & Donuts Saturday group and special events
Monthly family outings
Early registration for Family Membership events
Invitations to Parent Only events
Invitations to Member Only Family Activities and Events
Access to Parent Supports
Discounts at local businesses and more...

Cost: \$25/year
Membership Type: Family (adults + children under 6yrs)
Length: Annual

Youth Center Membership

At The Spot-Located at 64 Purchase St

The Spot is open every day after school. A relaxing and cozy space for middle school members to socialize, play games, work on projects and homework. Filled with couches to recline on, tables to sit and play board games, and snack bar to purchase after school treats.

Memberships are no charge. Register to receive discounts on plenty of NYS youth programs. Transportation from the Nock and RVCS is provided daily. Participants are also encouraged to ride their bikes, walk, and drop-in for the activities they are interested in. On a daily basis, kids can use this space to hang out, socialize, do arts and crafts, play board games, and participate in any of our clubs. The Spot is open Monday-Friday 2:15-5:00pm.

Cost: Free
Membership Type: Individual (Grades 6-8)
Length: Annual

NLEC- Learning Enrichment Center

The NLEC is a partnership between Rec and Youth Services and the Newburyport Public Schools. The center offers academic and social development support for students who qualify based on household income levels. NLEC staff provide academic tutoring and homework assistance as well as cultural and enrichment activities Mon-Thursday 2-5pm.

Cost: Free
Membership Type: Individual (School Age)
Length: Annual

Memberships can be found on the MyRec site under "Register"

Multicultural Families Membership



A REGIONAL SOCIAL GROUP THAT CONNECTS MULTICULTURAL FAMILIES OF:

- NON-MAJORITY RACIAL IDENTITIES
- ETHNICITIES
- COUNTRIES OF ORIGIN
- AND/OR FAMILY STRUCTURES INCLUDING LGBTQ+, DONOR CONCEIVED AND ADOPTIVE FAMILIES

WE COME TOGETHER FOR PLAY, CONVERSATION, AND CONNECTION THROUGH QUARTERLY EVENTS.

If you are part of a multicultural family, join our website to sign up for our free membership and learn about upcoming events





Grandparents Raising Grandchildren

Join us in a judgement free zone, a time and place to share feelings, experiences, and resources. Facilitated by Kathleen Shaw, LICSW. Meets every month on the second Wednesday from 5:30-7 PM at YWCA Children’s Center located at 13 Pond Street, Newburyport (behind CVS). Childcare and pizza provided. Contact KathleenShaw@comcast.net to RSVP

Newburyport Mentoring

We partner with Big Friends, Little Friends to offer mentoring to youth ages 6-14. We are always looking for new adult mentors to be matched with children on the waitlist. Please reach out to Trish, our Support Coordinator at TBoateng@cityofnewburyport.com for more information.

Resources

Do you have what you need? Do you need help with food, clothing, housing, fuel assistance, mental health supports, etc? Our community is fortunate to have several organizations with social workers who can help you get resources and supports in place:

Newburyport Recreation & Youth Services
Newburyport residents:
Trish Boateng, LSW, Support Coordinator
Call or Text 978-572-6189

Community Service of Newburyport
Serves Newburyport, Newbury, West Newbury
Pam Gray, Program Administrator
978-465-7562

Pettengill House
Serves Newburyport, Amesbury, Groveland, Merrimac, Newbury, Rowley, Salisbury, West Newbury
Families with Children:
Anna Reilly 978-315-1672
Senior Support (60 years and older):
Allison Helie, 978-243-4992
Adults :
Ann Champagne, 978-243-9744
Substance Misuse, Addiction, and Recovery:
Lauri Murphy, 978-243-9746

Food Resources
Our Neighbor’s Table
<https://www.ourneighborstable.org>

Newbury Food Pantry
<https://www.newburyfoodpantry.org>

Nourishing the North Shore
<https://www.nourishingthenorthshore.org>



**GRANDPARENTS*
RAISING
GRANDCHILDREN**
*And other Adults

Join us in a judgement free zone, a time and place to share feelings, experiences and resources.

Facilitated by Kathleen Shaw, LICSW

UPCOMING DATES:

- September 11
- October 9
- November 13
- December 11
- January 8
- February 12
- March 12
- April 9
- May 14
- June 11

Time: 5:30-7:00pm
***Child care and pizza provided**



Wednesdays
2nd Wed of Each month




YWCA Children’s Center
13 Pond St Newburyport





Call For Information Call
978-465-4434

Newburyport Rec & Youth Services is thankful for our partnership with Moriarty's Driving School, which helps families in need receive discounted Driver's Education



MORIARTY'S DRIVING SCHOOL

Moriarty's is Veteran and Law Enforcement owned, with over 20 years of experience teaching driver's education.

FOR NEED-BASED SCHOLARSHIPS, PLEASE CONTACT TRISH, SUPPORT COORDINATOR
378-572-6289
tboateng@newburyportma.gov

Holiday Program FAMILY TO FAMILY

Fulfilling Family Wishes




DOES YOUR FAMILY NEED HELP THIS HOLIDAY SEASON?

LET OUR COMMUNITY ELVES HELP FILL YOUR FAMILIES NEEDS AND WISHES.

IF YOU LIVE IN NEWBURYPORT OR IN YWCA GREATER NEWBURYPORT HOUSING, YOU CAN SIGN UP FOR FAMILY TO FAMILY THIS HOLIDAY SEASON.

Please complete the family sign up by November 1st. Links will be available on our website on October 1st.

Contact Trish Boateng for more information
Please visit www.cityofnewburyport.com/recreation-and-youth-services

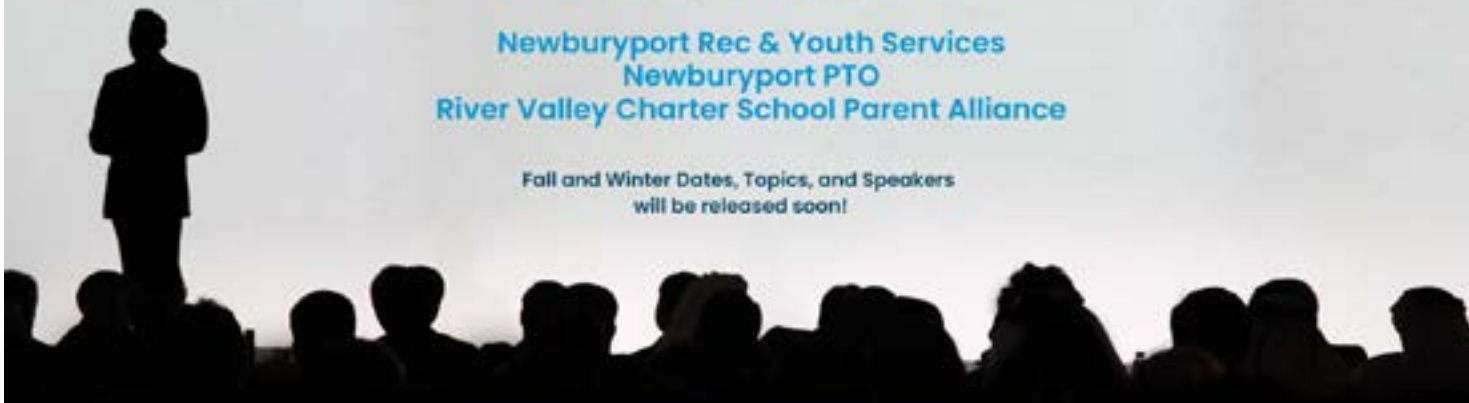


THE PARENTING YEARS SPEAKER SERIES


Brought to you by:

Newburyport Rec & Youth Services
Newburyport PTO
River Valley Charter School Parent Alliance

Fall and Winter Dates, Topics, and Speakers will be released soon!



Reach out to Newburyport Rec Support Coordinator for more info:
TBoateng@newburyportma.gov



Holiday Program FAMILY TO FAMILY

Fulfilling Family Wishes



Last year we provided holiday joy to over 150 Newburyport and YWCA resident families in need with help from people like you. We anticipate more families this year will be seeking support.

Please consider signing up this year to support a family. You can request the family size, split a family with other elves, sign up as a group or volunteer to help on site.

Family to Family is a unique program that allows all family members to provide their needs and wishes as well as their interests and hobbies. Everyone receives at least one wish and one need, as well as a family activity.

Sign up will begin October 1st. Email Trish Boateng for more info
TBoateng@newburyportma.gov

Please visit www.cityofnewburyport.com/recreation-and-youth-services



NEWBURYPORT COMMUNITY MENTORS




Big Friends, Little Friends

We are looking for mentors to join our program!

Mentor Training at City Hall
Early November
from 6-8:30 PM

Mentors are matched with local youth and spend time together a few times a month, for a year



For more info or to sign up, please email Trish at tboateng@newburyportma.gov



Safe Sitter Essentials
Babysitter Certification



Safe Sitter Essentials

Designed for young people in grades 6-8 to be safe when they're home alone, watching younger siblings, or babysitting. Students learn life-saving skills such as how to rescue someone who is choking, and helpful information like what to do in severe weather. The lessons are filled with fun activities and role playing exercises. Students even get to use CPR manikins to practice choking and rescue CPR!

INSTRUCTOR: Emma Quateman

GRADES: 6-8

Sept. 28

LOCATION: City Hall Conference

INSTRUCTOR: Emma Michaud

GRADES: 6-8

DATE: Sept 28

DAY: Sat

TIME: 9:30-3:00 pm

FEES (R/NR): \$135/ \$148

Nov. 5-7

LOCATION: Sr Community Center

INSTRUCTOR: Emma Michaud

GRADES: 6-8

DATE: Nov 5- Nov 7

DAY: Tue-Thu

TIME: 4:00-6:00 pm

FEES (R/NR): \$135/ \$148

Dec. 7

LOCATION: City Hall Conference

INSTRUCTOR: Emma Michaud

GRADES: 6-8

DATE: Dec 7

DAY: Sat

TIME: 9:30-3:00 pm

FEES (R/NR): \$135/ \$148

SUICIDE PREVENTION

SEPTEMBER IS SUICIDE PREVENTION MONTH

SUICIDE PREVENTION A COMMUNITY GATEKEEPER TRAINING

DEPRESSION DOESN'T ALWAYS LOOK LIKE "DEPRESSION"

- Join the Samaritans of Merrimac Valley
- Learn the signs
- Learn how to respond and what resources there are
- Become a resource to others in your life

WED. OCT 9TH
6:30 TO 8 PM

NEWBURYPORT PUBLIC LIBRARY

This is a free training open to any and all



FALL JIGSAW PUZZLE COMPETITION 2024

FRIDAY, NOVEMBER 15
CITY HALL AUDITORIUM

\$25/TEAM
Includes pizza, snacks and you take home the puzzle!

EVENT SCHEDULE

6-6:30

- Check-in and Pizza
- Used Puzzle Swap-bring one take one!

6:30

- Competition Begins

EVENT INFO

- AGES 8-100+
- TEAMS OF 1-4 PEOPLE (FRIENDS, FAMILY, COWORKERS, ETC.)
- 500 PIECES (ALL TEAMS COMPLETE THE SAME PUZZLE)
- PRIZES FOR 1ST AND 2ND PLACE IN DIFFERENT DIVISIONS

Register through Newburyport Rec!

NEWBURYPORT RECREATION AND YOUTH SERVICES

CITY OF NEWBURYPORT RECREATION AND YOUTH SERVICES

Family Dance Parties

Fall Dance: Fri, Oct 4th
Winter Dance: Sat, Dec 14th

Come out to City Hall and join us for our Family Dances! These dances are for parents/guardians and their children ages 0 to 6! We'll have a DJ, Games, Prizes and more for the family to enjoy!

The dances are **Free Community events**, please register to participate.

Youth Craft Fair

Are you an artist, maker, crafter, designer, do-er, creator, entrepreneur? Apply today to sell your work at the annual youth craft fair. All work must be hand made and designed by youth. This is open for any youth 18 and under. Deadline to apply is October 11th.

Apply today and start building your inventory! There are limited spots and not all applications will be chosen.

LOCATION: NBPT Community Senior Center
 GRADES: Under 18
 DATE: Dec 6
 DAY: Fri
 TIME: 5:00-7:00pm



GROWING HUMANITARIANS

Join us at "Growing Humanitarians," where families come together each month to make a real difference! This isn't just another group—it's an exciting opportunity for adults and kids to work side by side on meaningful projects that spread kindness and compassion in our community and beyond. From creating care packages to organizing fun drives, every gathering is a chance to learn, grow, and take action.

If you're passionate about raising the next generation to be thoughtful, engaged, and caring individuals, come be a part of something truly special!



Cradles to Crayons

Join us at City Hall to create "Care Packages for Cradles" to Crayons. Please bring supplies to donate, we will be putting the care packages together in the City Hall Auditorium. Cradles for Crayons is looking for items such as art supplies, clothes based on season, and school supplies. We will be writing letters of encouragement and positivity to add to the care packages. More info after you sign up!

LOCATION: City Hall Auditorium
 AGES: 2-8
 DATE: Sept 26
 DAY: Thu
 TIME: 10:00am- 12:00 pm

Decorate the Senior Center for Halloween

Come Decorate the Senior Community Center for Halloween! We will supply to crafts to make the decorations. This is a great opportunity to spread joy to the seniors in our community. Come Decorate the Senior Community Center for Halloween! We will supply to crafts to make the decorations. This is a great opportunity to spread joy to the seniors in our community.

LOCATION: Senior Center-TBD
 AGES: 2-16
 DATE: Oct 17
 DAY: Thu
 TIME: 4:00-5:00 pm

Crafting for a Cause

Come to the Senior Community Center to make Blankets to donate to local hospitals and shelter. Children and Adults will be guided on how to make the blankets. All Materials will be supplied.

LOCATION: Senior Center-TBD
 INSTRUCTOR: Emma Michaud
 AGES:
 DATE: Nov 14
 DAY: Thu
 TIME: 4:00-6:00 pm
 FEES (R/NR): \$10/ \$10

Lasagna Love

Lasagna Love is a wonderful organization which helps to connect volunteers with those in need. We will be making lasagnas to donate delicious homemade lasagnas made with love. We will also be writing letters of love and encouragement to go along with the food donation. Feel free to bring any ingredients you would like to add. More info to come!

LOCATION: Senior Center-TBD
 INSTRUCTOR: Emma Michaud
 AGES: 2-16
 DATE: Dec 19
 DAY: Thu
 TIME: 4:00-6:00 pm
 FEES (R/NR): \$15/ \$15

TOUCH-A-TRUCK

Saturday, Oct 19th

10am-1pm



FREE Family Event
Cashman Park

12-1pm will be a sensory friendly hour
with no air horns or sirens.



New this year!
More Activities &
Mini- train rides



CITY DEPT TRICK OR TREAT



Join Us for a Spooky Halloween at City
Hall and the Senior Community Center!

Date: **October 24, 2024**

Time:

5-6PM City Hall

4-6PM Senior/ Community Center

FREE

Come in your costume!

INVITATION NIGHT MOVIES

Interactive Movies

NBPT Rec will be hosting our annual special Invitation Night Drop-Offs at City Hall again this year!

Your child is welcome to bring blankets, pillows and their comfiest PJs!

The kids will enjoy our fun interactive movie experience to a winter classic along with other snacks, drinks and activities while you treat yourself to a night on th town during the Newburyport Chamber Invitation Night!

Grades 1-5

Friday, Dec 13th 6:30-9pm
and
Friday, Dec 20th 6:30-9pm



CLASSIC ROM-COMS AND CRAFTING SERIES

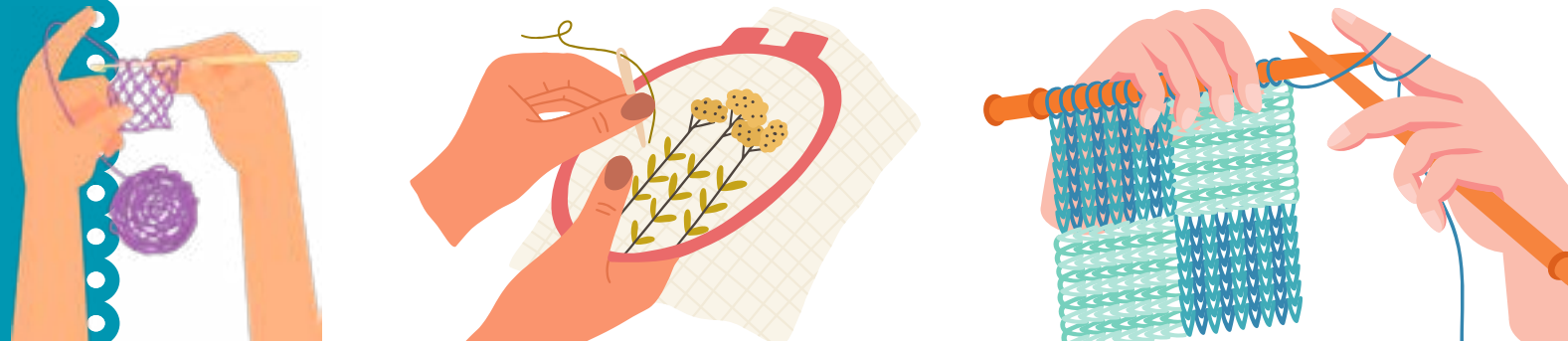


Ever wanted to bring your crochet to the cinema, but it's just too dark? Work on that knitted scarf but worried about annoying the person next to you? Look no further because Craft Cinema is coming to Newburyport! We'll be enjoying a series of classic rom-coms. Grab a friend and join!

Unlike traditional cinema experiences, the lights will be gently dimmed to allow you to both enjoy the movie AND continue crafting. Whether you're a fan of the films, a lover of all things crafty, or simply seeking a unique activity, Craft Cinema will be great!

\$10 SENIORS AND KIDS UNDER 16
\$12 GENERAL ADMISSION

- SAT OCTOBER 12 1:00PM PRACTICAL MAGIC
- SAT NOVEMBER 16 1:00PM WHEN HARRY MET SALLY
- SUN DECEMBER 15 7:00PM LOVE ACTUALLY
- SUN JANUARY 26 7:00PM NOTTING HILL





**Adult Pickleball
Fall Casual Play**

This program requires registration and is geared towards the Blue and Green Level players and is located at the court between the Bresnahan School and NBPT Sr Center. Players will be rotated through on a first come first serve basis and coordinated by Mike Menesale.

LOCATION: Sr Community Center/Bres Court
INSTRUCTOR: Mike Menesale

AGES: 18+
DATE: Sep 4- Sep 30
DAY: Mon/Wed
TIME: 4:00-6:00pm
REG DEADLINE: Open
FEES (R/NR): FREE

Do you have a program you'd like to see offered? Or perhaps, one you'd like to run? Please help us grow our Adult Rec programming. Contact Joe Pauline at NBPT Rec. We would love to hear from you! 978-465-4434

Adult Hiking Club

LOCATION: Varies
INSTRUCTOR: Tina Los
FEES (R/NR): \$10/ \$15

Come join our Fall Adult Hiking Program led by experienced hiker (and marathoner) Tina Los. We welcome people of all abilities but it is required that you fill out our question form so that we have the necessary information for our instructor to make every hike a safe, successful and pleasurable experience for everyone. For anyone in need of transportation we will have a van that will meet at 9am at the former Park & Ride lot for all hikes and return there after the hike. Full descriptions are available online at registration.

Fall Hikes

September 24 (Thursday)- Easy to Moderate hikes- Crane Beach Dunes- Ipswich, MA (Drive time 30 minutes from Newburyport) Crane Beach Loop- 3.0 miles 127 ft elevation gain. Discover a new side of Crane beach. This loop offers otherworldly landscapes of foliage, wildlife and the beach and are especially breathtaking this time of year. Hike is mostly on sand and a few boardwalks. Wear sneakers. <https://www.alltrails.com/trail/us/massachusetts/crane-beach-loop>

October 21 (Monday)- Moderately Challenging route- Mt. Wachusett- East Princeton, MA (75 minute drive from Newburyport) Wachusett Mountain Old Indian, Stage Coach, Bicentennial Trails- 4.9 miles with 1,151 ft of elevation gain. Immerse yourself in the fall foliage through this loop trail with views from the top of Mt. Wachusett. A perfect fall hike. <https://www.alltrails.com/trail/us/massachusetts/wachusett-summit-loop>

November 6 (Wednesday)- Moderate hike- Pawtuckaway State Park- Nottingham, NH-(40 minute drive from Newburyport) 5.0 mile hike with 823 ft of elevation gain. Popular hike for birding and exploring nature changing seasons. <https://www.alltrails.com/explore/trail/us/new-hampshire/south-mountain-lookout-tower-trail--2>



Come out and play!
ADULT RECESS

A NEW ADULT REC PROGRAM

Sign up for the season _____ Or Drop In when you can
Meet new people _____ Or Sign up with friends

ALTERNATING WEDNESDAY NIGHTS 6:30PM

 KICK BALL SEPT 25 Cashman Park	 PING PONG OCT 9 Senior Community Center	 DODGEBALL OCT 23 NHS Gym
 MINUTE TO WIN IT NOV 6 Senior Community Center	 BOWLING NOV 20 Game Time	 FLOOR HOCKEY DEC 4 NHS Gym

Dates of Activities subject to change depending on weather and space.

Informal meet-ups after at a local restaurant each week for those who want to join!

- 📍 Locations set for each event
- 🕒 Plan on 1 hr

Event Highlights:

- ✓ AGES 18+
- ✓ Free Childcare (must register)
- ✓ \$65 or \$20/drop In

Soccer Shots

Soccer Shots North Shore and New Hampshire is an engaging children's soccer program with a focus on character development. Our caring team positively impacts children's lives on and off the field through best-in-class coaching, communication and curriculum. Our coaches are the best-trained in the business. Our expert-approved curriculum is age-appropriate and aligns with childhood education standards. In addition, we provide an exceptional customer experience and ongoing communication with parents. You must also register with Soccer Shots. After you register on the Newburyport Recreation Department website. Soccer Shots will send you a link to register on their site. Soccer Shots charges a \$35 annual enrollment fee once per year. If you've paid the annual enrollment fee within the last year, the Soccer Shots system will not charge you. But you will still have to sign their waiver. LOCATION: Moseley Woods Lawn INSTRUCTOR: Mike Bono

Mini 2 yr olds
 DATE: Sep 14- Nov 2
 DAY: Sat
 TIME: 9:00-9:30am
 REG DEADLINE: 1 Week Prior
 FEES (R/NR): \$172/ \$189

Classic 3 yr olds
 DATE: Sep 14- Nov 2
 DAY: Sat
 TIME: 9:40-10:15am
 REG DEADLINE: 1 Week Prior
 FEES (R/NR): \$172/ \$189

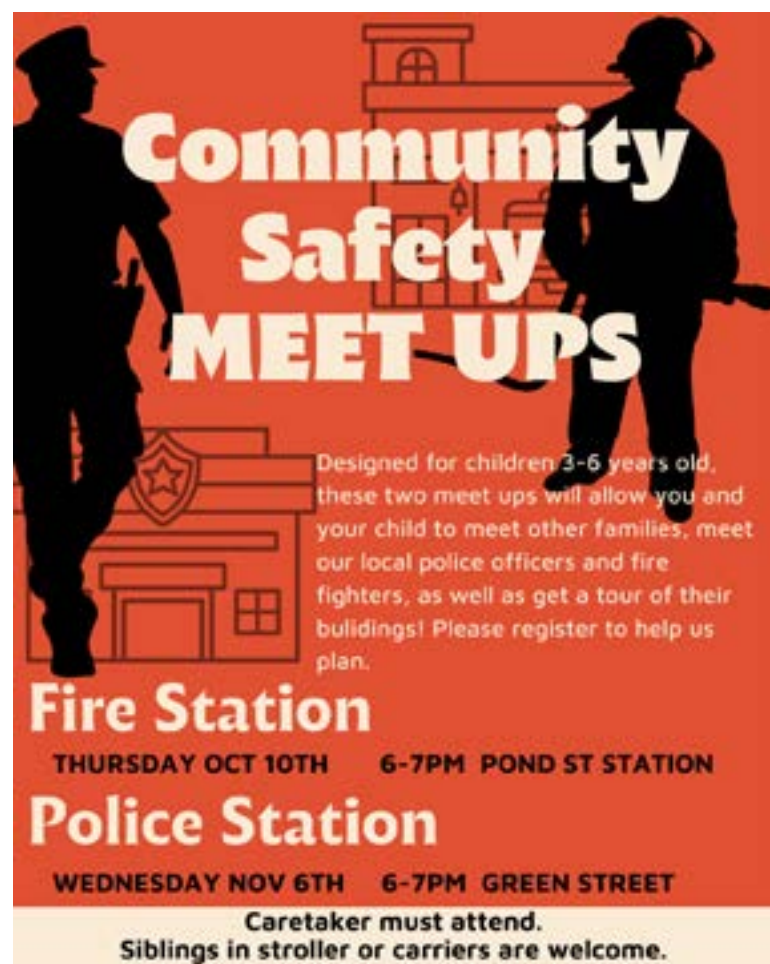
Classic 4/5 yr olds
 DATE: Sep 14- Nov 2
 DAY: Sat
 TIME: 10:25-11:05am
 REG DEADLINE: 1 Week Prior
 FEES (R/NR): \$172/ \$189



PRE-SCHOOL TEA PARTIES
 JOIN US FOR A SNACK, A STORY AND A CRAFT!
 DRESS FOR THE THEME OR COME AS YOU ARE!
 Located at City Hall. Free for Residents. Please register to save a spot!

- FRI SEPT 27 ROYAL TEA PARTY
- TUES OCT 22 SUPERHERO PARTY
- WED NOV 20 TEDDY BEAR PARTY
- TUES DEC 10 PAJAMA PARTY

Ages 2.5-5
 10am-11am Caretaker must attend.
 Siblings in stroller or carriers are welcome.



Community Safety MEET UPS

Designed for children 3-6 years old, these two meet ups will allow you and your child to meet other families, meet our local police officers and fire fighters, as well as get a tour of their buildings! Please register to help us plan.

Fire Station
 THURSDAY OCT 10TH 6-7PM POND ST STATION

Police Station
 WEDNESDAY NOV 6TH 6-7PM GREEN STREET

Caretaker must attend.
 Siblings in stroller or carriers are welcome.

Children Sports and Fitness

InclYousion Sports

Football/Track and Field
 Join us for a fun 8-week sports program for children of all abilities to learn the fundamentals of Football and Track & Field! Classes are non-competitive and are perfect for beginners or for children who are looking for small class sizes taught by well-trained coaches. InclYousion Sports provides all equipment and children only need to bring water and wear comfortable clothes and shoes. This program is designed for children with and without disabilities to learn and play together. Skill building is focused on running, throwing, catching and jumping, and is modified to each child's experience level. InclYousion Sports provides inclusive sports enrichment programs to children, using innovative behavioral methods to teach sports, fitness, and social skills. Programs are designed by physical education, behavioral, and inclusion experts to introduce all children to a variety of sports through a series of lessons focused on skill building. InclYousion Sports is on a mission to make high quality sports enrichment programs accessible to all children. Learn more at <https://inclYousionsports.com/> No Class on October 13th in observation of Indigenous Peoples' Day
 LOCATION: Moseley Woods Lawn
 INSTRUCTOR: Greg Perkins

AGES 2-4
 DATE: Sep 8-Nov 3
 DAY: Sun
 TIME: 9:00-9:50am
 REG DEADLINE: 1 Week Prior
 FEES (R/NR): \$220/ \$242

AGES 5-7
 DATE: Sep 8-Nov 3
 DAY: Sun
 TIME: 10:00-10:50am
 REG DEADLINE: 1 Week Prior
 FEES (R/NR): \$220/ \$242

Ultimate Frisbee

Fall Ultimate Frisbee
 Ultimate (Frisbee) is an exciting, fun, non-contact team sport that mixes elements of soccer, basketball, and American football into one high energy game. The Fall session of Ultimate is open to all levels of players introducing both the fundamentals as well as opportunities to compete in games. All sessions will be in Newburyport with potential games and end of season tournament with other communities.

LOCATION: Nock/Molin Field
 INSTRUCTOR: Kerry Lagueux
 GRADES: 7-12
 DATE: Sep 8-Nov 3
 DAY: Sun
 TIME: 11:00am-1:00pm
 REG DEADLINE: 1 Week Prior
 FEES (R/NR): \$65/ \$75

FREE PLAY CLUB

This is a chance for the kids to have some supervised Free Play after school and to gain some positive, unstructured, active social time with their peers. This setting is provided to help boost kids' creativity and independence. The staff on site is there to help provide guidance, suggestions and help enhance the skills that come with the benefits of Free Play!

LOCATION: Nock/Molin Gym
 INSTRUCTOR: Emily Webber
 GRADES: 4-5
 DATE: Sep 27- Nov 22 *Skip Oct 11
 DAY: Fri
 TIME: 4:30-6:00pm
 FEES (R/NR): Free- Must Register to Attend*

Moving in the Mornings

Join Matt Valli and Kristin Spinney on Monday and Wednesday mornings at the Bresnahan Gym and get your kids moving before school starts! They'll be playing a wide variety of fun games and fitness activities every morning!

LOCATION: Bresnahan
 INSTRUCTOR: Matt Valli/Kristin Spinney
 GRADES: K-3
 DATE: Feb 3-Mar 26
 DAY: Mon/Wed
 TIME: 7:15-8:05am
 REG DEADLINE: 1 Week Prior
 FEES (R/NR): \$200/ \$220

Children's Sports and Fitness

Parkour

Movement classes that are designed to jump start your child's day with a healthy dose of movement, exploration, and fun! Skills sessions are a great way to learn the basics, build on techniques, or master certain movements in a small-group instruction context. This class is for youth of all ability and fitness levels, and will include instruction in the basic movements and techniques of parkour, as well as exercises designed to improve general fitness and ensure the long-term practice of parkour.

LOCATION: Moseley Woods Pavillion

INSTRUCTOR: Blake Evitt

DATE: Oct. 14

DAY: Mon

AGES: 6-9

TIME: 9:30am-12:00pm

FEES (R/NR): \$60/ \$70

AGES: 9-13

TIME: 12:30-3:00pm

FEES (R/NR): \$60/ \$70

5 Weeks with 5Dragons

Are you ready to kick start your journey into Martial Arts? Over these 5 weeks, you will learn awesome strikes, powerful kicks and unstoppable blocks! You will even master a traditional kata (a cool sequence of moves) and learn how to count to 10 in Japanese. Teamwork drills are fun but create leadership and problem solving skills. Plus, we'll talk about what it takes to be a leader and the power of a "yes I can" mindset.

GRADES: 4-6

LOCATION: Nock/ Molin

INSTRUCTOR: Sempi Chase

DATE: Oct 25- Nov 22

DAY: Fridays

TIME: 2:15-3:15pm

REG DEADLINE: 1 Week Prior

FEES (R/NR): \$50/\$60



Early Release Days

In The Game

We're headed to In The Game for an afternoon of lunch, video games, laser tag, VR, and ropes course.

LOCATION: Pick up at Nock/ Molin

GRADES: 4-8

DATE: Oct 11

DAY: Fri

TIME: 11:00am-3:00pm

FEES (M/ NM): \$48/ \$58

Launch Trampoline Park

School's Out Early and we're headed to Launch for an afternoon of Jumping. Lunch is provided.

LOCATION: Pick up at Nock/ Molin

GRADES: 4-8

DATE: Nov 5

DAY: Tue

TIME: 11:00am-3:00pm

FEES (M/ NM): \$48/ \$58

Chunkys Cinema

A relaxing afternoon of Movie, popcorn, and lunch!

LOCATION: Pick up at Nock/ Molin

GRADES: 4-8

DATE: Dec 13

DAY: Fri

TIME: 11:00am-3:00pm

FEES (M/ NM): \$48/ \$58

Turkey Trot Run Club

Our Run Clubs are led by fun and experienced coaches who will teach kids proper techniques through various games, challenges and drills to help prepare them for future 5K's, Fun Runs, Races and Sports! The focus of our Run Clubs are to have fun while we run! All

Participants get a run club jersey.

GRADES: 1-3

LOCATION: Bresnahan

INSTRUCTOR: Matt Valli/ Kristin Spinney

DATE: Oct 7-Nov 25 skip Oct 14, Nov 11

DAY: Mon/Wed

TIME: 7:15-8:05am

REG DEADLINE: 1 Week Prior

FEES (R/NR): \$220/ \$242

GRADES: 4-5

We need a coach? Are you interested?

GRADES: 6-8

LOCATION: Nock/ Molin

INSTRUCTOR: Beth Dollas/ Karri Madona

DATE: Sept 24- Oct 29

DAY: Thursdays

TIME: 2:15-3:15pm

REG DEADLINE: 1 Week Prior

FEES (R/NR): \$105/ \$115



Fall and Winter

PORT REC
DROP-OFF

FRIDAY NIGHTS

5:30-8:30PM

\$25 RESIDENTS/ \$30 NR

GRADES 1-5

SEPT
20

OCT
18

NOV
1

JAN
17

GAMES

ACTIVITIES

CRAFTS

MOVIES/
CARTOONS

Join NBPT REC Staff
for a fun Friday night!

Film/Acting/Media

Boston Casting

Kids Acting for Film/TV

This class is an introduction to on-camera acting for our youngest actors! Classwork includes improvisation exercises, short commercial scripts, and short scenes from television/film. Students will learn how to slate for the camera, how to audition with and without a script, and how to answer interview/audition questions. Students are filmed each week and parents will receive the video uploads to watch at home.

LOCATION: Bresnahan

INSTRUCTOR: Brittany Shapiro

GRADES: 2-3

DATE: Sep 26-Oct 17

DAY: Thu

TIME: 2:45-3:45pm

REG DEADLINE: 1 Week Prior

FEES (R/NR): \$79/ \$89

Kids Acting: Disney Scenes

Using scripts from their favorite Disney shows, students will perfect their on-camera audition skills and create strong, interesting characters. Class work will target breaking down a script, working with a partner and finding the jokes in the scene. Students are filmed each week and parents will receive the video uploads to watch at home.

LOCATION: Bresnahan

INSTRUCTOR: Brittany Shapiro

GRADES: 2-3

DATE: Nov 7-Dec 5 Skip Nov 28

DAY: Thu

TIME: 2:45-3:45pm

REG DEADLINE: 1 Week Prior

FEES (R/NR): \$79/ \$89

These programs are brought to you by Boston Casting, Inc. – the largest television and film casting company in New England. Recent projects include 'THE HOLDOVERS', 'GOOD BURGER 2', 'CODA' (AppleTV+), and 'JULIA' (HBO). Learn more about us at bostoncasting.com

THERA-REC MEMBERS EVENTS WITH PORT REC

Sensory Friendly Movies

Join us for Free movies that are a little quieter and a little less dark. Geared for 1st graders - adults! 10am shows.

Sun Sept 29th Wild Robot
Sun Dec 8th Moana 2
Sun Jan 12th Sonic 3

FREE

Family Swims

Join us for a 1 hour open swim! Meet up with friends or make new ones! Caregivers must stay with children. Both lap and warm pool will be available.

Sat October 5th
Sat November 16th
1-2pm

FREE

Autism Eats

Autism Eats provides autism-friendly non-judgmental environments for family dining, socializing and connecting with others who share similar joys and challenges.

Visit autismeats.org for more info and to buy tickets!



MEMBERSHIPS ARE FREE.
ALL PROGRAMS REQUIRE REGISTRATION.

Programs are funded through a grant from the Peter and Elizabeth C. Tower Foundation

Do you have a family member with special needs or considerations? Our Therapeutic Recreation Membership allows us to better meet the needs of your family and connect you to other families in the community as well as local resources and special programs!

CHILDREN'S REC

Horsemanship/Equestrian

High Tail Acres

High Tail Acres offers a great opportunity for the students to experience the workings of a stable with hands on activities and to also experience 2 riding lessons per day, group activities and horse related crafts. The counselors at High Tail Acres have all participated in the horsemanship programs at High Tail and are eager to share their own experiences through interaction with the students. The instructors are Massachusetts licensed, with years of teaching experience. The school days off and school vacation programs offered at High Tail Acres, LLC are open to beginner and intermediate levels, therefore giving the opportunity for the beginner rider to develop the necessary foundation of basic skills and the intermediate rider to improve upon their skills.

LOCATION: High Tail Acres
INSTRUCTOR: Dawn Deltorcchio
AGES: 6-12

Oct. 14 Horsemanship

DAY: Mon
TIME: 9:00am-2:00pm
REG DEADLINE: 1 Week Prior
FEES (R/NR): \$120/ \$132

Nov. 11 Horsemanship

DAY: Mon
TIME: 9:00am-2:00pm
REG DEADLINE: 1 Week Prior
FEES (R/NR): \$120/ \$132

Jan. 20 Horsemanship

DAY: Mon
TIME: 9:00am-2:00pm
REG DEADLINE: 1 Week Prior
FEES (R/NR): \$120/ \$132

Dec. Vacation Horsemanship

DATE: Dec 30,31
DAY: Mon/Tue
TIME: 9:00am-2:00pm
REG DEADLINE: 1 Week Prior
FEES (R/NR): \$215/ \$237

Cooking/Baking/Nutrition

Fall Harvest Cooking

This fall session will have you stirring up delicious fruit-based treats, savory soups, harvest salads and scrumptious quick breads, all while learning good cooking techniques. In this class, enjoy skill building as you prepare recipes cooperatively in small groups.

LOCATION: NBPT Senior Community Center
INSTRUCTOR: Fran Kaplan
GRADES: 4-6
DATE: Sep 18-Oct 9
DAY: Wed
TIME: 4:00-5:30pm
REG DEADLINE: 1 Week Prior
FEES (R/NR): \$100/ \$110

Holiday Baking

Get ready to bake a variety of mouthwatering items during this late fall session. We'll be making pie, cake, cookies and scones that are sure to be enjoyed by family and friends. Learn some preparation skills that good cooks know and have some fun.

LOCATION: NBPT Senior Community Center
INSTRUCTOR: Fran Kaplan
GRADES: 4-6
DATE: Nov 13-Dec 11 Skip Nov 27
DAY: Wed
TIME: 4:00-5:30pm
REG DEADLINE: 1 Week Prior
FEES (R/NR): \$100/ \$110

Fran Kaplan is a professional foods and nutrition educator and Occupational therapist who has worked with youth for decades. She holds dual degrees of M.Ed and M.S. OTR/L



Children's STEM and Nature

Garden Club at the Bres

Fall Garden Club

Our Instructor/Bresnahan Teacher Katara Harding, has recently started the Bresnahan Community Learning Gardens in the back of the school building and they have been thriving all summer long! She's very passionate about this project and looks forward to getting kids involved in these gardens and this program is a great way to do so! Katara and the kids will focus on learning about gardening, how to properly water, weed, plant, harvest, etc. This will be an outdoor program with the option to move indoors to her classroom if the weather is inclement.

LOCATION: Bresnahan
 INSTRUCTOR: Katara Harding
 GRADES: K-3
 DATE: Sep 19-Oct 24
 DAY: Thu
 TIME: 2:45-3:45pm
 REG DEADLINE: 1 Week Prior
 FEES (R/NR): \$100/ \$110



Girls After School Hangout

This after school program is for girls to come celebrate their friendships, explore new activities and speak their minds in a 'girl's only' atmosphere. This is a hang out for 4th and 5th grade girls! There will be nail painting, temporary tattoos, friendship bracelet making, inventions, creations and arts & crafts.

Girls After School Hangout-Fall

LOCATION: Sr Community Center
 INSTRUCTOR: Emma Michaud
 GRADES: 4-5
 DATE: Sep 17- Oct 15
 DAY: Tue
 TIME: 4:30-5:30 pm
 FEES (R/NR): \$50/ \$60

Arts & Crafts

The Art of Paper Making

It's time to make your own handmade paper! In this wonderful after school art program, kids will learn the history and process to make paper. We will also be making handmade journals and learning the steps the bind a book/journal. All materials are supplied for this program.

LOCATION: Sr Community Center
 INSTRUCTOR: Emma Michaud
 GRADES: 4-5
 DATE: Sep 17- Oct 15
 DAY: Tue
 TIME: 5:45-7:00 pm
 FEES (R/NR): \$120/ \$132

Clay Club

Join us for Clay Club after school! This is a great opportunity for kids to learn about ceramics and the process of hand building. Kids will be making their own flower vases, mugs, magnets, and more! All clay and ceramic tools are provided.

LOCATION: Sr Community Center
 INSTRUCTOR: Emma Michaud
 GRADES: 4-5
 DATE: Oct 29- Dec 17 Skip Nov 5
 DAY: Tue
 TIME: 6:00-7:30 pm
 FEES (R/NR): \$150/ \$165

Girls After School Hangout-Winter

LOCATION: Sr Community Center
 INSTRUCTOR: Emma Michaud
 GRADES: 4-5
 DATE: Oct 29- Dec 17 skip * 11/5/2024
 DAY: Tue
 TIME: 4:30-5:30 pm
 FEES (R/NR): \$50/ \$60

Childrens Stem and Nature



Buildwave

Want to foster your child's interest in STEM, while igniting their creative spark at the same time? Buildwave is a creative building program that feels like a video game! Over the course of the sessions students create with over 50 different building materials, including Lego®, PlusPlus®, and custom-made Buildwave materials.

Each session of the program is a new "level" of the Buildwave game, with an audiovisual setup featuring animations and music that guide students through the different building waves. As your child creates with wave after wave of new objects, they build creative confidence, become better collaborators, and encounter design and engineering fundamentals in a unique and memorable context.

LOCATION: Nock/Molin or Bres
 INSTRUCTOR: Tim Merle

Buildwave 4-8

DATE: Oct. 2- Nov 20
 DAY: Wed
 TIME: 2:15-3:15pm
 FEES (R/NR): \$220/ \$242

DATE: Dec 11- Feb 12 *Skip Dec 25, Jan 1
 DAY: Wed
 TIME: 2:15-3:15pm
 FES (R/NR): \$220/ \$242

Buildwave K-3

DATE: Oct 3-Nov 21
 DAY: Thu
 TIME: 2:45-4:00pm
 FEES (R/NR): \$220/ \$242

DATE: Dec 12- Feb 6 *skip Dec 26
 DAY: Thu
 TIME: 2:45-4:00pm
 FEES (R/NR): \$20/ \$242

Seacoast Technology

Lego Robotics and Engineering

Using the latest LEGO robotics technology participants will have an opportunity to explore the amazing world of LEGO(R) robotics and engineering. We will learn about gears, circuits, and computer programming as we design, build, and program a variety of different robotics and engineering projects. Over 50 different projects are available including motorized cars and walkers, remote-controlled tanks, and amusement park rides. Projects are available for all skill levels. Note: Participants DO NOT take projects home
 LOCATION: Sr Community Center
 INSTRUCTOR: Kevin Husson



GRADES: 1-3

DATE: Oct 3-Oct 24 *Skip Oct 10
 DAY: Thu
 TIME: 4:30-6:00pm
 FEES (R/NR): \$75/ \$85

DATE: Nov 21- Dec 19 *Skip Nov 28, Dec 12

DAY: Thu
 TIME: 4:30-6:00pm
 FEES (R/NR): \$99/ \$109

Minecraft Game Coder

It's been a longtime coming but Seacoast Technology Workshops is excited to launch our first ever Minecraft workshop! Using exclusive content only available in Minecraft Education, participants will design arcade games in Minecraft while exploring the fundamentals of coding within the Minecraft universe! Prerequisite: Participants should have played and have a basic understanding of Minecraft.

LOCATION: Sr Community Center
 INSTRUCTOR: Kevin Husson

GRADES: 3-6

DATE: Oct 3-Oct 24
 DAY: Thu
 TIME: 4:30-6:00pm
 FEES (R/NR): \$99/ \$109

DATE: Nov 14- Dec 12 *Skip Nov 11

DAY: Thu
 TIME: 4:30-6:00pm
 FEES (R/NR): \$99/ \$109

SAFE @ HOME

Thurs, Sept 19 2:15-4:30



4th-6th graders will be more confident staying home alone after this one day safety training with NBPT Rec. that covers all the basics and what to do in an emergency.

FREE PROGRAMS YOUTH THRIVE Fostering Independence & Safety

Thurs, Sept 26 2:15-4:30

Bicycle Safety Rodeo



4th-6th graders will learn about bike parts, rules of the road, safe biking habits, and test their skills on a bike obstacle course!

Both held at the Nock/Molin
Cityofnewburyport.com/rec

YOUTH PROGRAMS

THE SPOT

64 Purchase St. Newburyport



The Spot is open Tuesday-Friday after school. A relaxing and cozy space for members to socialize, play games, work on projects and homework. Filled with couches to recline on, tables to sit and play board games, and snack bar to purchase after school treats.

Transportation from the Nock and RVCS is provided for all members

Participants are also encouraged to ride their bikes, walk, and drop-in for the activities they are interested in.

Open Tuesday-Friday
2:15-5pm

Register for a Free Membership to have access to the after school space and discounts on NBPT Rec Youth and Teen Programs



www.newburyportyouthservices.com

YOUTH COUNCIL

Open to ALL young people grades 6-12

THURSDAYS 5:30-6:30 PM

@ Public Library

NO APPLICATION
NEEDED



YOUTH
RUN.
ADULT
SUPPORTED.



Port Rec is actively seeking dedicated, enthusiastic, and motivated young people to join the Youth Council. Council members have the important duty of advising Port Rec staff on the programs and issues concerning the youth of Newburyport, as well as participating in community building projects of their own creation throughout the year.

This is a great way to get involved in your community and make a difference. Youth Council also participates in annual events with neighboring community youth councils doing similar work. They will plan and run some of their own events for peers based on their interests, as well as volunteering with various agencies in Newburyport.

Great on college applications & for completing volunteer hours!



Chess Masters

Whether you're brand new to the game of Chess or practicing your skills to be a grand master this program is for you. We'll build some new defenses through chess drills, competitions and chess based games.

LOCATION: NYS Spot

GRADES: 6-8

Session 1

DATE: Sep 18-Oct 9

DAY: Wed

TIME: 3:00-4:00pm

FEES (M/ NM): \$18/ \$28

Session 2

DATE: Oct 30-Nov 20

DAY: Wed

TIME: 3:00-4:00pm

FEES (M/ NM): \$18/ \$28

Climbing

We're hanging around MetroRock in Newburyport for some indoor rock climbing. We'll get to do some bouldering, top ropes, and auto belays. All rentals are included for shoes and a harness.

LOCATION: Meet at NYS Spot

GRADES: 6-12

Session 1

DATE: Sep 27-Oct 25 skips 10/11

DAY: Fri

TIME: 3:15-4:30pm

FEES (M/ NM): \$55/ \$65

Session 2

DATE: Nov 1-Nov 22

DAY: Fri

TIME: 3:15-4:30pm

FEES (M/ NM): \$55/ \$65

Cooking

Cooking to Connect

Students will learn Puerto Rican style recipes that will empower them to explore different cooking techniques. They will gain knowledge on how to use different kitchen equipment and utensils. Students will gain social skills, as the recipes are group based activities. They will begin to tell a story through different ingredients and create community by connecting with other peers. Each lesson will be followed by a new theme every week. Students will learn to find their inner chef through the course of the program. By the end of the 4 week program, students will earn a Certificate of Completion and feel inspired to continue to learn different cultural cuisines.

LOCATION: NBPT Senior Community Center

INSTRUCTOR: Pineiro's Kitchen

GRADES: 6-8

Fall Session 1

DATE: Sep 16-Oct 7

DAY: Mon

TIME: 4:00-6:00pm

FEES (M/ NM): \$150/ \$160

Fall Session 2

DATE: Oct 21-Nov 18 * skips jan 11

DAY: Mon

TIME: 4:00-6:00pm

FEES (M/ NM): \$150/ \$160

**CITY OF NEWBURYPORT
RECREATION AND
YOUTH SERVICES**

NAGLY
NORTH SHORE ALLIANCE OF GLBTQ YOUTH

**OCTOBER 2ND MEETING:
AJH FOCUS GROUP**

**PARTICIPATE IN A COMMUNITY NEEDS
FOCUS GROUP LOOKING TO HEAR
WHAT LGBTQIA+ YOUTH IN THE AREA
HAVE TO SAY - SHARE YOUR VOICE
AND IMPACT FUTURE SERVICES!**

**FREE SNACKS, \$25 GIFT CARD
FOR EACH PARTICIPANT!**

**MEETINGS ARE THE 1ST WED OF
THE MONTH
5:30-7 PM
@THE NEWBURYPORT PUBLIC
LIBRARY**

D and D

Whether you've spent hours rolling dice and adventuring or are not even sure what D&D is, this program is perfect for you! D&D Campaigns are a collaborative improvisational role-playing game where players create characters, adventure, roll dice and work together to have as much fun as humanly possible. Join us each week for fantasy adventures in the world's greatest role-playing game.
 LOCATION: NBPT Senior Community Center
 GRADES: 6-8

Fall Session 1

DATE: Sep 16-Oct 21 *skips 10/14
 DAY: Mon
 TIME: 4:00-5:30pm
 FEES (M/ NM): \$55/ \$65

Fall Session 2

DATE: Nov 18-Dec 16
 DAY: Mon
 TIME: 4:00-5:30pm
 REG DEADLINE:
 FEES (M/ NM): \$55/ \$65



Early Release Days

Apple Picking

Join us for a double-whammy Early Release trip! First we'll head to Cider Hill Farm, where we'll pick our own apples and sample some cider. Next, we'll head back to Newburyport to bake our freshly-picked apples into delicious individual apple crisps.
 LOCATION: Pick up at Nock/Molin
 GRADES: 6-8
 DATE: Sep 13
 DAY: Fri
 TIME: 11:00am-3:00pm
 FEES (M/ NM): \$30/ \$40

In The Game

We're headed to In The Game for an afternoon of Lunch, video games, laser tag, VR, and ropes course.
 LOCATION: Pick up at Nock/Molin
 GRADES: 4-8
 DATE: Oct 11
 DAY: Fri
 TIME: 11:00am-3:00pm
 REG DEADLINE:
 FEES (M/ NM): \$48/ \$58

Launch Trampoline Park

School's Out Early and we're headed to Launch for an afternoon of Jumping. Lunch is provided.
 LOCATION: Pick up at Nock/ Molin
 GRADES: 4-8
 DATE: Nov 5
 DAY: Tue
 TIME: 11:00am-3:00pm
 FEES (M/ NM): \$48/ \$58

Chunkys Cinema

A relaxing afternoon of Movie, popcorn, and lunch!
 LOCATION: Pick up at Nock/Molin
 GRADES: 4-8
 DATE: Dec 13
 DAY: Fri
 TIME: 11:00am-3:00pm
 FEES (M/ NM): \$48/ \$58

Paper Craft Series

Scrap Booking

Are you tired of having thousands of pictures in the cloud with no way to display them? Design and create pages that document your memories with style at our Scrapbooking Workshop, instructed by local paper crafter Carol Leblanc!
 LOCATION: NBPT Senior Community Center
 GRADES: 6-12
 DATE: Sep 16, Sep 23
 DAY: Mon
 TIME: 4:00-6:00pm
 FEES (M/ NM): \$50/ \$60

Quilling

Spice up any paper-based craft with the captivating art of quilling! Twist, curl, and glue strips of paper to create striking designs you can add to any paper project.
 LOCATION: NBPT Senior Community Center
 GRADES: 6-12
 DATE: Sep 30
 DAY: Mon
 TIME: 4:00-6:00pm
 FEES (M/ NM): \$15/ \$25

Printmaking

Explore the art of printmaking with a Foam Block technique. Use carving tools to create your own landscape, picture, or design and transfer it to paper using traditional printmaking tools
 LOCATION: NBPT Senior Community Center
 GRADES: 6-12
 DATE: Oct 7
 DAY: Mon
 TIME: 4:00-6:00pm
 FEES (M/ NM): \$30/ \$40



Fiber Craft Series

Needle Felting

Get ready to felt with local artist Tif Farmakis-Day! We'll learn the basics of the craft of needle-felting, completing a project to take home by the end of the activity.
 LOCATION: NBPT Senior Community Center
 GRADES: 6-12
 DATE: Nov 18
 DAY: Mon
 TIME: 4:00-6:00pm
 FEES (M/ NM): \$25/ \$35

Crochet

Master basic crochet skills to complete a stuffed crochet mushroom, and contribute to a group project!
 LOCATION: NBPT Senior Community Center
 GRADES: 6-12
 DATE: Nov 25
 DAY: Mon
 TIME: 4:00-6:00pm
 FEES (M/ NM): \$12/ \$22

Knitting

Master casting on, binding off, and knitting and purling at our Knitting Workshop! Learn this meditative skill, and create a small kitten dishtowel in the process.
 LOCATION: NBPT Senior Community Center
 GRADES: 6-12
 DATE: Dec 2
 DAY: Mon
 TIME: 4:00-6:00pm
 FEES (M/ NM): \$12/ \$22

Floral Arranging Fun With Flowers

Students will learn about the different varieties of the flowers that they will be working with and how to properly care for them. Students will also have a general introduction to the principle elements of design: color, light, space, line, form, pattern, texture, and size. In the spirit of the fall season, each student will create their own fresh floral arrangement inside a real pumpkin! All flowers and materials will be provided. Their creations will also come home with them!

LOCATION: NBPT Senior Community Center

GRADES: 6-12
DATE: Oct 28, Nov 4
DAY: Mon
TIME: 4:00-5:30pm
FEES (M/ NM): \$60/ \$60

Parker River Wildlife Refuge Series

Nature & Science Discovery

Join a park ranger from Parker River National Wildlife Refuge for a hands-on project exploring the world around us. All equipment and materials provided. Each program will provide you something to take home, plus something cool to teach a friend or family member!

LOCATION: NBPT Senior Community Center

Session 1

GRADES: 6-12
DATE: Dec 9
DAY: Mon
TIME: 4:00-6:00pm
FEES (M/ NM): \$18/ \$28

Session 2

GRADES: 6-12
DATE: Dec 16
DAY: Mon
TIME: 4:00-6:00pm
FEES (M/ NM): \$18/ \$28

Middle School Events

Halloween Dance

LOCATION: Newburyport City Hall



Black Light Bingo

America's favorite game: Bingo. In a party atmosphere. We'll have a live DJ and MC for this late night BINGO party

LOCATION: NBPT Senior Community Center

GRADES: 6-8
DATE: Nov 8
DAY: Fri
TIME: 7:00-9:00pm
FEES (M/ NM): \$5/ \$10

Video Game Tournament

We're teaming up with Vecor Gaming from Amesbury for this multi screen gaming Tournament. This event we'll be focused on Super Smash Bros with prizes awarded

LOCATION: Newburyport City Hall

GRADES: 6-8
DATE: Nov 22
DAY: Fri
TIME: 7:00-9:00pm
FEES (M/ NM): \$5/ \$10

