



**SUMMER
2025
PREVIEW**

SAVE THE DATE

*Saturday, January 25th
City Wide Talent Show*



**CITY OF NEWBURYPORT
RECREATION AND
YOUTH SERVICES**

MID WINTER 2024-2025

REGISTRATION INFORMATION Winter 2024-25

Resident Registration is Open Non-Resident Registration is Open

Register online at:
newburyportma.myrec.com

New department website
cityofnewburyport.com/rec



On the Cover:
Clipper Basketball Summer 2024
Photo by Keenan Jackson - kjinematics.com

REGISTRATION POLICIES & PROCEDURES:

- Register on-line at <https://newburyportma.myrec.com> or at the office located at City Hall.
- In person registration can be paid for with a check (written to Newburyport Recreation) or cash.
- Returned checks will be charged a fee per City of Newburyport policy.
- Recreation and Youth Services reserves the right to correct or modify program information due to errors, omissions, or changes. Errors can happen in printing so please check our website for the most current information/corrections/changes before registration.
- Fees listed in the brochure are for City of Newburyport Residents and Non-residents. Resident fees are noted as "R".
- Non-resident fees are noted as "NR". Non-residents pay an additional 10% of the program cost (minimum is \$10). This rate may be waived in an effort to increase registration or on one day programs/ events. The department reserves the right to give priority to residents.
- Program deadlines are usually set for 2 weeks prior to the program start. After this date there may be a \$15 late fee applied.
- Late Registrations: Programs will generally not be prorated if registering within the first 2 weeks of the program start date.
- Most Newburyport Rec programs are self-sustaining through user fees, for more information on pricing, see our cost recovery policy on our website.
- Age requirements: Children must be the required age or grade by the start date of the program.
- All participants are required at registration to complete emergency information. This includes medical and behavioral information as well as emergency contacts and a liability waiver. *See Therapeutic Rec Policies for information about special needs.
- Liability: Participants agree to forever release the City of Newburyport from any and all claims from participation in the City's voluntary programs. A complete liability statement is on file at Newburyport Rec.
- Photo Permission: Participants in sponsored activities permit to the taking of photos and videos of themselves and their children for publication both digital and print, as the City deems necessary.

RECREATION POLICIES

Financial Assistance: We would like to make these programs accessible to all of our city's residents. Please contact us if you need financial assistance. Payment plans and scholarships are available.

Behavior standards: The following standards are set to ensure that all participants can have an enjoyable time while participating in the programs and activities listed in this book.

It is unacceptable behavior to use profanity or other inappropriate language; to be disrespectful to program staff and other participants, or show non-compliant behavior; to cause intentional damage or defacing of property; to cause continuous disruptive behavior to classes or programs; or to exhibit any aggressive act (hitting, kicking, biting, etc.) which is initiated or in retaliation. Temporary removal or permanent suspension from the program and/or facilities may result if behavior standards are not maintained.

Special Needs: We are committed to ensuring that our programs are inclusive and accessible to all. We offer a Therapeutic Rec Membership to any individuals with special needs or accommodations. The membership provides us with an opportunity to learn more about what you or your family need in order to enjoy our programs. Please complete the free membership on newburyportma.myrec.com.

Confirmation: Your registration receipt is your confirmation. You will receive a program reminder or "Know Before you Go" email two weeks prior to the start of the program. Department staff may contact you two weeks prior to let you know if the program has not met its minimum or is being cancelled.

Confidentiality: You and your family's forms are confidential and are shared only with program staff. Class rosters are not confidential, often families would like to know if their child will have any friends in the program, for this purpose we do share rosters. When you provide your email to us for registration, it is automatically added to our email mailing list. It is not given out to any other organization.

PROGRAM CANCELLATION POLICY

Withdrawals: Participants withdrawing are asked to give notice at least two weeks prior to program start date. A participant who withdraws at least two weeks prior to the class start date will be given a refund, minus a \$10.00 administration fee. You can transfer to another program for no charge.

Refunds: In the event Newburyport Rec cancels a program, a complete refund will be made.

Location of classes and/or fields is subject to change. This is out of the hands of the City and there will be no refunds for class location changes. Refunds are not given for weather cancellation of less than 25% of the program time and only then if make-ups cannot be offered. Refunds are not given for special events involving ticket purchase or if the department has incurred an expense on your behalf. There are no refunds for missed classes.

Cancellations after the session starts:

If you are unhappy with a program after the first session, please contact us right away to discuss withdrawing and receiving a refund.

A prorated percent of the class fee plus a \$10.00 cancellation fee and any direct program material costs will be refunded unless the program is cancelled by the Recreation Department or a physician's excuse is presented. No refunds will be issued after the 3rd week of the session or halfway through the class, whichever comes first.

Refunds can be credited to your Household account, back to the original credit card, or a check will be issued. Refund checks will be issued approximately within thirty days after notification of cancellation.

Weather Related Cancellations: Programs do not run if Newburyport Public Schools are cancelled. Summer programs may be cancelled due to inclement weather or extreme heat. The City reserves the right to cancel due to dangerous weather. Cancellations are sent via email through the myrec registration program. If possible, make-ups will be offered.

Enrollment Cancellations: Recreation and Youth Services reserves the right to cancel any program due to under-enrollment or unforeseen circumstances.

Letter from the Director

Dear Friends,

As winter approaches, we’re excited to share our December through March program lineup with you! This season is full of opportunities to stay active, connect with neighbors, and create memories, no matter the weather.

From holiday-themed activities and new classes to youth sports, arts programs, and outdoor winter adventures, there’s something for everyone. We’re particularly thrilled to introduce the City Wide Talent Show.

Our team is dedicated to making sure this winter is your most enjoyable yet. Whether you’re trying something new, building traditions, or simply looking for ways to stay engaged, we’re here for you. Thank you for being part of our recreation community!

We look forward to seeing you at one of our activities this season! Let’s make this winter season one to remember- and as always, please let your kids look through, they may surprise you!

Warm wishes,
Andi Egmont
Director of Youth and Recreation Services

ACTIVITY GUIDE DIRECTORY

Memberships	Pg 6-7
Services & Supports	Pg 8-10
Family/ Communiyt Rec	Pg 11-12
Events	Pg 13
Adult Rec	Pg 14
Pre-School Rec	Pg 15
Children’s Rec	Pg 16-21
Summer Preview	Pg 22-23
Youth Programs	Pg 24-27

Follow us on Facebook @newburyportrec

CONTACT INFORMATION

Office:
City Hall
60 Pleasant Street
2nd Floor

Office Hours:
Mon-Thur 9am-3pm
Friday 8am-Noon

Due to the nature of our work,
we are often at programs.
Please email or call ahead.

978-465-4434

General email:
youthservices@cityofnewburyport.com

Register online at:
newburyportma.myrec.com

New department website
cityofnewburyport.com/rec



Meet the Team



Andrea Egmont, Director



Lee Gordon, Associate Director,
Youth Programs



Joe Pauline, Associate Director,
Rec and Enrichment



Tina Los, Associate Director,
Services and Supports



Tarah Luciano,
Program Coordinator, NLEC



Trish Boateng (LSW),
Supports Coordinator

Emma Michaud, Activities Coordinator,
Rec and Enrichment

Meghan Meagher, Activities Coordinator,
Youth Programs

Stacy Gisjbers, Office Manager/ Admin

Renee Miciek, Grant Admin Support

MEMBERSHIPS

Therapeutic Recreation Membership

For families with individuals who have special needs. Please register your child(ren) and complete the TheraRec forms. This will enroll your family in our newsletter and updates for special events.

Accommodations or supports for inclusive participation in Recreation and Youth Services programs
Specialized programs
Family events and activities
Sensory Friendly Events
Newsletters with information from community partners

Cost: Free
Membership Type: Individual (All Ages)
Length: Annual

Family Club Membership

The Family Club Membership is designed to help connect and meet the needs of families with children under the age of 6 in the Greater Newburyport area.

Discounts on pre-school age programs
Playgroup Matching
Dads, Dudes & Donuts Saturday group and special events
Monthly family outings
Early registration for Family Membership events
Invitations to Parent Only events
Invitations to Member Only Family Activities and Events
Access to Parent Supports
Discounts at local businesses and more...

Cost: \$25/year
Membership Type: Family (adults + children under 6yrs)
Length: Annual

Youth Center Membership

At The Spot-Located at 64 Purchase St

The Spot is open every day after school. A relaxing and cozy space for middle school members to socialize, play games, work on projects and homework. Filled with couches to recline on, tables to sit and play board games, and snack bar to purchase after school treats.

Memberships are no charge. Register to receive discounts on plenty of Rec and Youth Services programs. Transportation from the Nock and RVCS is provided daily. Participants are also encouraged to ride their bikes, walk, and drop-in for the activities they are interested in.

On a daily basis, kids can use this space to hang out, socialize, do arts and crafts, play board games, and participate in any of our clubs.
The Spot is open Monday-Friday 2:15-5:00pm.

Cost: Free
Membership Type: Individual (Grades 6-8)
Length: Annual

NLEC- Learning Enrichment Center

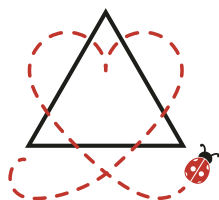
The NLEC is a partnership between Rec and Youth Services and the Newburyport Public Schools. The center offers academic and social development support for students who qualify based on household income levels. NLEC staff provide academic tutoring and homework assistance as well as cultural and enrichment activities Mon-Thursday 2-5pm.

Cost: Free
Membership Type: Individual (School Age)
Length: Annual

Memberships can be found on the MyRec site under "Register"

MEMBERSHIPS

Multicultural Families Membership



**A REGIONAL SOCIAL
GROUP THAT CONNECTS
MULTICULTURAL FAMILIES
OF:**

- NON-MAJORITY RACIAL IDENTITIES
- ETHNICITIES
- COUNTRIES OF ORIGIN
- AND/OR FAMILY STRUCTURES INCLUDING LGBTQ+, DONOR CONCEIVED AND ADOPTIVE FAMILIES

**WE COME TOGETHER FOR
PLAY, CONVERSATION,
AND CONNECTION
THROUGH QUARTERLY
EVENTS.**

If you are part of a multicultural family, join our website to sign up for our free membership and learn about upcoming events



SERVICES & SUPPORTS



Grandparents Raising Grandchildren

Join us in a judgement free zone, a time and place to share feelings, experiences, and resources. Facilitated by Kathleen Shaw, LICSW. Meets every month on the second Wednesday from 5:30-7 PM at YWCA Children's Center located at 13 Pond Street, Newburyport (behind CVS). Childcare and pizza provided.
Contact KathleenShaw@comcast.net to RSVP

Newburyport Mentoring

We partner with Big Friends, Little Friends to offer mentoring to youth ages 6-14. We are always looking for new adult mentors to be matched with children on the waitlist. Please reach out to Trish, our Support Coordinator at TBoateng@newburyportma.gov for more information.



Program Scholarships

NBPT REC doesn't want money to get in the way of your family participating in programs. Please reach out to learn more.

Full and partial scholarships are available as well as connecting you to other community resources.

Resources

Do you have what you need? Do you need help with food, clothing, housing, fuel assistance, mental health supports, etc? Our community is fortunate to have several organizations with social workers who can help you get resources and supports in place:

Newburyport Recreation & Youth Services

Newburyport residents:

Trish Boateng, LSW, Support Coordinator

Call or Text 978-572-6189

Community Service of Newburyport

Serves Newburyport, Newbury, West Newbury

Pam Gray, Program Administrator

978-465-7562

Pettengill House

Serves Newburyport, Amesbury, Groveland, Merrimac,

Newbury, Rowley, Salisbury, West Newbury

Families with Children:

Anna Reilly 978-315-1672

Senior Support (60 years and older):

Allison Helie, 978-243-4992

Adults :

Ann Champagne, 978-243-9744

Substance Misuse, Addiction, and Recovery:

Lauri Murphy, 978-243-9746

Food Resources

Our Neighbor's Table

<https://www.ourneighborstable.org>

Newbury Food Pantry

<https://www.newburyfoodpantry.org>

Nourishing the North Shore

<https://www.nourishingthenorthshore.org>

SERVICES & SUPPORTS



GRANDPARENTS* RAISING GRANDCHILDREN

*And other Adults

Join us in a judgement free zone, a time and place to share feelings, experiences and resources.

Facilitated by Kathleen Shaw, LICSW



Wednesdays

2nd Wed of Each month



YWCA Children's Center
13 Pond St Newburyport



Call For Information Call
978-465-4434

UPCOMING DATES:

September 11

October 9

November 13

December 11

January 8

February 12

March 12

April 9

May 14

June 11

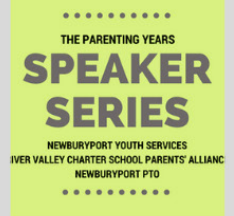
Time: 5:30-7:00pm

***Child care and pizza provided**



Parenting Years Speaker Series

UPCOMING EVENTS



05
DEC. 2024

JON MATTLEMAN

Mental Health Presenter and Consultant

▶▶ Let's talk about the "A" Word (Anxiety)



13
FEB. 2025



JESSICA LAHEY

New York Times Bestselling Author

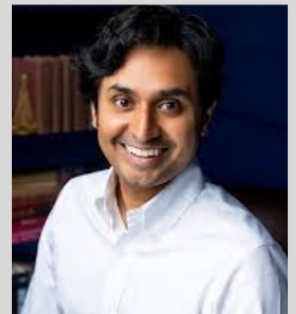
▶▶ The Gift of Failure: How the best parents learn to let go so their children can succeed

27
MARCH 2025

DR. ALOK KANOJIA

Harvard-trained addiction psychiatrist
Cofounder of Healthy Gamer

▶▶ Level Up: Winning Strategies for Parents of Gamers



16
APRIL 2025



DR. PETER GRAY

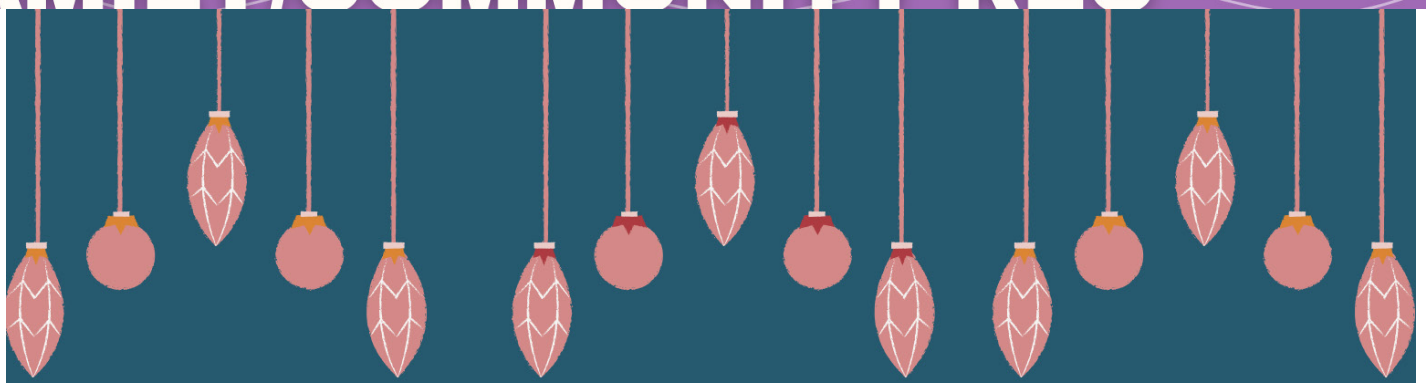
Research Professor of Psychology & Neuroscience

▶▶ Why Play is Essential

All events will be held at the
Nock Middle School Auditorium (70 Low St., Newburyport)
at 7 PM

FREE childcare will be available
For more info, contact Renee at rmiciek@newburyportma.gov

FAMILY/COMMUNITY REC



A SPECIAL NIGHT FOR YOUR LITTLE ONES
AND THEIR FAVORITE GROWN UPS!
DINNER, DANCING, PHOTOS AND MORE...



NEWBURYPORT FAMILY FORMAL

SAVE THE DATE: SATURDAY, MAY 3RD 5-7PM
TICKETS GO ON SALE WITH SUMMER
REGISTRATION IN MARCH

COMMUNITY TALENT

SHOW

NEWBURYPORT'S GOT TALENT



JANUARY 25TH

SNOW MAKE UP SUNDAY AT 1PM

SIGN-UP

TODAY



7:00PM



CITYOFNEWBURYPORT.COM/REC

ALL AGES

SOLO ACTS, GROUPS, FAMILIES

VARIETY OF TALENTS

MUSIC, DANCE, COMEDY

BE CREATIVE AND

APPROPRIATE FOR ALL AGES

TICKETS WILL BE AVAILABLE TO THE PUBLIC

NOCK SCHOOL AUDITORIUM

SIGN UP NOW

NBPT REC AND YOUTH SERVICES

EVENTS

INVITATION NIGHT MOVIES

Interactive Movies

NBPT Rec will be hosting our annual special Invitation Night Drop-Offs at City Hall again this year!

Your child is welcome to bring blankets, pillows and their comfiest PJs!

The kids will enjoy our fun **interactive movie experience to a winter classic** along with other snacks, drinks and activities while you treat yourself to a night on the town during the Newburyport Chamber Invitation Night!

Grades 1-5

**Friday, Dec 13th 7:00-9pm
and
Friday, Dec 20th 7:00-9pm**

A group of girls posing for a photo with stars in the background. The girls are of various ages and are smiling. The background is a light blue with many small red stars.

GIRLS NIGHT 2025

Grades 4-6

**Friday, January 9th
7:00-9:00 pm
@City Hall Auditorium**

*New Year
New Memories*

- Crafts
- Music
- Activities
- Self Defense
- Snacks
- And more...

**Register ahead spots limited
\$10**

ADULT REC



More Spring Pickleball Coming in 2025!

Do you have a program you'd like to see offered? Or perhaps, one you'd like to run? Please help us grow our Adult Rec programming. Contact Joe Pauline at NBPT Rec. We would love to hear from you! 978-465-4434



THE SCREENING ROOM

CLASSIC ROM-COMS AND CRAFTING SERIES



Ever wanted to bring your crochet to the cinema, but it's just too dark? Work on that knitted scarf but worried about annoying the person next to you? Look no further because Craft Cinema is coming to Newburyport! We'll be enjoying a series of classic rom-coms. Grab a friend and join!

Unlike traditional cinema experiences, the lights will be gently dimmed to allow you to both enjoy the movie AND continue crafting.

Whether you're a fan of the films, a lover of all things crafty, or simply seeking a unique activity, Craft Cinema will be great!

\$10 SENIORS AND KIDS UNDER 16
\$12 GENERAL ADMISSION

SUN DECEMBER 15 7:00PM

LOVE ACTUALLY (R)

SUN JANUARY 26 7:00PM

NOTTING HILL (PG-13)

PRE-SCHOOL TEA PARTIES

**JOIN US FOR A SNACK, A STORY
AND A CRAFT!**

**DRESS FOR THE THEME OR
COME AS YOU ARE!**

*Located at City Hall. Free for Residents.
Please register to save a spot!*

WED JAN 15 NEW YEAR'S TEA PARTY

Come celebrate 2025 and the year ahead!

WED FEB 12 BEST FRIEND TEA PARTY

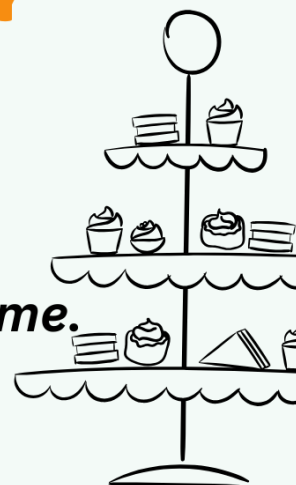
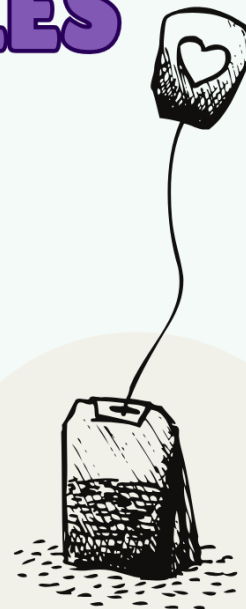
Bring your best friend (real, stuffed or imaginary!)

WED MAR 12 MAGICAL TEA PARTY

Come enjoy all things magic and fantasy!

**Ages
2.5-5**

*10am-11am Caretaker must attend.
Siblings in stroller or carriers are welcome.*





FEBRUARY VACATION

**JOIN US FOR YOUR
WEEK OFF OF SCHOOL**



Feb 18-21

**Program details and
descriptions are online.
Registration is limited, sign up
early.**

INFO ONLINE

Program Offerings

Safe Sitter Certification

Grades 6-8; Wed, 9:30am-3:00pm

Lego Robotics Build and Code

Grades 1-6, Tues- Thurs, 9-11:45am

Video Game Programming

Grades 3-6, Tues- Thurs, 12:15-3pm

Stem Time, Let's build!

Grades K-5; Tues- Fri, 9am-12pm

PE Fun and Games

Grades K-3; Tues- Fri, 9am-2pm

Day Trips and Activities

Grades 6-8; Tues- Thurs

**Middle School
Day Trips**

**Tues: Boda Borg
Wed: APEX**

**Thurs: Thrifting &
lunch**

Feb Vacation

Feb Vacation PE Fun and Games

Join Mr. Valli and Mrs. Rescott for some winter fun! We will be celebrating February vacation in style this year at the Bres!. We will be doing all kinds of PE games/activities and sports to keep your student moving and entertained! We are hoping for snow so we can go sledding!

LOCATION: Bresnahan
INSTRUCTOR: Matt Valli/Lindsay Rescott
GRADES: K-3
DATE: Feb 18-21
DAY: Tue-Fri
TIME: 9:00am-2:00pm
REG DEADLINE:
FEES (R/NR): \$300/ \$330

Safe Sitter Babysitting Certification

Feb. Vacation Safe Sitter

Designed for young people in grades 6-8 to be safe when they're home alone, watching younger siblings, or babysitting. Students learn life-saving skills such as how to rescue someone who is choking, and helpful information like what to do in severe weather. The lessons are filled with fun activities and role-playing exercises. Students even get to use CPR manikins to practice choking and rescue CPR!

LOCATION: Bresnahan Library
INSTRUCTOR: Andrea Egmont
GRADES: 6-8
DATE: Feb 19
DAY: Wed
TIME: 9:30am-3:00 pm
FEES (R/NR): \$135/ \$148

Seacoast Technology

Feb Vacation Lego Robotics Build and Code

This workshop is designed to develop building and programming skills. Participants will work with LEGO WeDo and LEGO Mindstorms to explore and produce a variety of working models. Have your own idea? Then dig your hands into over 50,000 specialized LEGO technic parts, motors, and sensors to create your own robot. Then use LEGO's easy-to-use drag-and-drop software to bring your creation to life! Note: Participants do not take projects home.

LOCATION: Bresnahan
INSTRUCTOR: Kevin Husson
GRADES: 1-6
DATE: Feb 18-20
DAY: Tue-Thu
TIME: 9:00am-11:45am
FEES (R/NR): \$99/ \$109

Feb. Vacation Video Game Programmer

LOCATION: Bresnahan
INSTRUCTOR: Kevin Husson
GRADES: 3-6
DATE: Feb 18-20
DAY: Tue-Thu
TIME: 12:15-3:00pm
FEES (R/NR): \$99/ \$109

CHILDREN'S REC

Feb. Vacation Stem Time, Let's Build!

This program is led by popular STEM teacher Kristin Spinney! Coding on Computers, Coding on Robots, Maker Space Building, Stem Bins Building. Hands on Building.

The STEM Lab is full of so many hands-on building activities. Start your morning with being able to utilize all the building materials. From the Maker Space to the Magnet Wall, Legos, BeeBot Robots, Keva Wood Blocks, to Marble Runs. The possibilities are endless on what you can create.

LOCATION: Bresnahan

INSTRUCTOR: Kristin Spinney

GRADES: K-3

DATE: Feb 18-21

DAY: Tue-Fri

TIME: 9:00am-12:00pm

FEES (R/NR): \$200/ \$220

DAY OFF & EARLY RELEASE TRIPS

**GRADES 4 & 5
NBPT REC STAFF
INCLUDES ACTIVITY AND
TRANSPORTATION**

Dave and Busters

DATE: Jan 10

DAY: Fri

TIME: 10:15am-2:45pm

FEES (R/NR): \$50/ \$60

Bowling at Gametime Lanes

DATE: Feb 7th

DAY: Fri

TIME: 11:00-2:00pm

FEES (R/NR): \$25/ \$35



Children's Art and Music

Awesome Art

Come join our new Art Program where children will be making projects daily to take home as well as have time to pick and choose other art activities once they have finished their main project (they can also choose to do their own art activity over the main project if they want). Our Instructor, Emma Michaud, has a wealth of knowledge and experience in the world of art and working with children and is excited to offer this fun program! Please make sure your child wears clothes that are ok to get messy!

LOCATION: Bresnahan Art Room
INSTRUCTOR: Emma Michaud
GRADES: 2-3
DATE: Jan 17- Mar 7 *skips Feb 7, 21
DAY: Fri
TIME: 2:45-4:00pm
FEES (R/NR): \$60/ \$70

Date Night Drop-Off

LOCATION: City Hall Auditorium
INSTRUCTOR: Emma Michaud
GRADES: 1-5

DATE: Jan 17
DAY: Fri
TIME: 5:30-8:30pm
FEES (R/NR): \$25/ \$30

DATE: Feb 28
DAY: Fri
TIME: 5:30-8:30pm
FEES (R/NR): \$25/ \$30

DATE: Mar 21
DAY: Fri
TIME: 5:30-8:30pm
FEES (R/NR): \$25/ \$30

Cooking/Baking/Nutrition

Cooking and Baking Classes

Around the World Cooking

Around the world cooking will be a course that offers basic cooking techniques, safety and sanitation in the kitchen within a fun and cooperative environment.

Fran Kaplan is an experienced foods and nutrition educator who has taught in the public sector. She holds advanced degrees in both education and home economics and occupational therapy.

LOCATION: Newburyport Senior Community Center
INSTRUCTOR: Fran Kaplan
GRADES: 4-6
DATE: Feb 4- Feb 25 *skips Feb 18
DAY: Tue
TIME: 4:00-5:30pm
FEES (R/NR): \$75/ \$85

Pokemon Club

Pokemon Adventure Club

Calling all kids who love all things Pokémon! In this super fun Pokémon class, students will come together to interact with our awesome Pokémon trainers to learn all things Pokémon. Students will play fun classroom games, such as Guess That Pokémon, learn about team compositions and Pokémon types, and participate in awesome battle simulations with other students. This class is all about fun. Students do not need to have their own cards, but they are welcome to bring them if they would like.

INSTRUCTOR: Sportszone 101

LOCATION: Bresnahan
GRADES: K-3
DATE: Jan 9-Feb 13
DAY: Thu
TIME: 2:45-3:45pm
FEES (R/NR): \$175/ \$195

LOCATION: Nock/Molin
GRADES: 4-6
DATE: Jan 17- Feb 14 *skips Feb 7
DAY: Fri
TIME: 2:15-3:15pm
FEES (R/NR): \$118/ \$130

Horsemanship/Equestrian

High Tail Acres

High Tail Acres offers a great opportunity for the students to experience the workings of a stable with hands on activities and to also experience 2 riding lessons per day, group activities and horse related crafts. The counselors at High Tail Acres have all participated in the horsemanship programs at High Tail and are eager to share their own experiences through interaction with the students. The instructors are Massachusetts licensed, with years of teaching experience. The school days off and school vacation programs offered at High Tail Acres, LLC are open to beginner and intermediate levels, therefore giving the opportunity for the beginner rider to develop the necessary foundation of basic skills and the intermediate rider to improve upon their skills.

Dec. Vacation Horsemanship

LOCATION: High Tail Acres
INSTRUCTOR: Dawn Deltorcchio
AGES: 6-12
DATE: Dec 30,31
DAY: Mon/Tue
TIME: 9:00am-2:00pm
FEES (R/NR): \$215/ \$237

Feb. Vacation Horsemanship

LOCATION: High Tail Acres
INSTRUCTOR: Dawn Deltorcchio
AGES: 6-12
DATE: Feb 19,20
DAY: Wed/Thu
TIME: 9:00am-2:00pm
FEES (R/NR): \$215/ \$237

Jan. 20 Horsemanship

LOCATION: High Tail Acres
INSTRUCTOR: Dawn Deltorcchio
AGES: 6-12
DATE: Jan 20
DAY: Mon
TIME: 9:00am-2:00pm
FEES (R/NR): \$120/ \$132

Boston Casting

Kids Acting for Film and TV

This class is an introduction to on-camera acting for our youngest actors! Classwork includes improvisation exercises, short commercial scripts, and short scenes from television/film. Students will learn how to slate for the camera, how to audition with and without a script, and how to answer interview/audition questions. Students are filmed each week and parents will receive the video uploads to watch at home. NEW scripts will be used, so returning students are welcome to attend!

This class is brought to you by Boston Casting, Inc. – the largest television and film casting company in New England. Recent projects include 'THE PERFECT COUPLE', 'AMERICAN FICTION', 'THE HOLDOVERS' and 'GOOD BURGER 2'. Learn more about us at bostoncasting.com

LOCATION: Bresnahan Library
INSTRUCTOR: Brittany Shapiro
GRADES: 2-3
DATE: Jan 23-Feb 13
DAY: Thu
TIME: 2:45-3:45pm
FEES (R/NR): \$79/ \$89

Kids Acting Disney Scenes (Grades 2 and 3)

Using scripts from their favorite Disney shows, students will perfect their on-camera audition skills and create strong, interesting characters. Class work will target breaking down a script, working with a partner and finding the jokes in the scene. Students are filmed each week and parents will receive the video uploads to watch at home.

LOCATION: Bresnahan Library
INSTRUCTOR: Brittany Shapiro
GRADES: 2-3
DATE: Mar 6- Mar 27
DAY: Thu
TIME: 2:45-3:45pm
FEES (R/NR): \$79/ \$89

Children's STEM

Robothink - Battle Robots

Let's duke it out, RoboThink-style! In this competitive class, students will be building and customizing a variety of different battle robots, then competing in a wide range of different activities. By using gears, motors, axles and our own special hardware, your child will be in for the battle of a lifetime. No experience necessary, just come battle and have fun!

LOCATION: Nock/Molin Cafeteria

INSTRUCTOR: Jorge Morales

GRADES: 4-8

DATE: Jan 7-Feb 11

DAY: Tue

TIME: 2:15-3:45pm

FEES (R/NR): \$250/ \$275

Rumble Robotics

Welcome to Rumble Robotics, where young aspiring engineers dive into the thrilling world of Battle Robots in bite-sized sessions! In just an hour, kids step into an action-packed adventure, building and battling their own spinning tops, commanding robot knights in epic duels, and racing their custom-designed cars. Our program simplifies the excitement, making it perfect for beginners - no experience required. With gears, axles, motors, and our cutting-edge RoboThink mainboards, young minds unleash their creativity and engineering skills. Get ready for an hour filled with fun, learning, and adrenaline-pumping challenges!

LOCATION: Bresnahan Room 235

INSTRUCTOR: Jorge Morales

GRADES: 2-3

DATE: Jan 7-Feb 11

DAY: Tue

TIME: 2:45-4:00pm

FEES (R/NR): \$250/ \$275

Seacoast Technology

Lego Robotics and Engineering

Using the latest LEGO robotics technology participants will have an opportunity to explore the amazing world of LEGO(R) robotics and engineering. We will learn about gears, circuits, and computer programming as we design, build, and program a variety of different robotics and engineering projects. Over 50 different projects are available including motorized cars and walkers, remote-controlled tanks, and amusement park rides. Projects are available for all skill levels. Note: Participants DO NOT take projects home.

LOCATION: Sr Community Center

INSTRUCTOR: Kevin Husson

GRADES: 1-3

DATE: Jan 9-Jan 30

DAY: Thu

TIME: 4:30-6:00pm

FEES (R/NR): \$99/ \$109

Minecraft Game Coder

It's been a longtime coming but Seacoast Technology Workshops is excited to launch our first ever Minecraft workshop! Using exclusive content only available in Minecraft Education, participants will design arcade games in Minecraft while exploring the fundamentals of coding within the Minecraft universe! Prerequisite: Participants should have played and have a basic understanding of Minecraft.

LOCATION: Sr Community Center

INSTRUCTOR: Kevin Husson

GRADES: 3-6

DATE: Jan 9- Jan 30

DAY: Thur

TIME: 4:30-6:00pm

FEES (R/NR): \$99/ \$109

2025 SUMMER *Programs*

We are making some changes to create more spaces!

SAFETY TOWN

**AGES 4-6
6 SESSIONS TO
CHOOSE FROM**

CLIPPER PLAYGROUND

**NOW FOR
GRADES 1-5**

SPORTS AND REC

**CASHMAN PARK
9-2
GRADES 5-7**



2025 SUMMER JOBS

**We will be hiring our biggest team yet!
With new programs like Safety Town, Sports
& Rec, and more, we have jobs for all kinds
of people who love kids!**

Help Spread the word!



- 21+ Program Coordinators (\$25+)
- 18+ Site Coordinators (\$18+)
- 15+ Rec Leaders (\$15+)
- 15+ Student Coaches (\$15+)

6-8 Weeks of work between June 23 and August 15

Jobs will be posted Feb 1 on the city's website

YOUTH PROGRAMS

THE SPOT



64 Purchase St. Newburyport

The Spot is open Tuesday-Friday after school. A relaxing and cozy space for members to socialize, play games, work on projects and homework. Filled with couches to recline on, tables to sit and play board games, and snack bar to purchase after school treats.

Transportation from the Nock and RVCS is provided for all members

Participants are also encouraged to ride their bikes, walk, and drop-in for the activities they are interested in.

**Open Tuesday-Friday
2:15-5pm**

Register for a Free Membership to have access to the after school space and discounts on NBPT Rec Youth and Teen Programs



www.newburyportyouthservices.com



Ski Trips



Day Off

There's No School on Jan 10th- so we have a full day on the slopes! Lift ticket, transportation and supervision are provided.

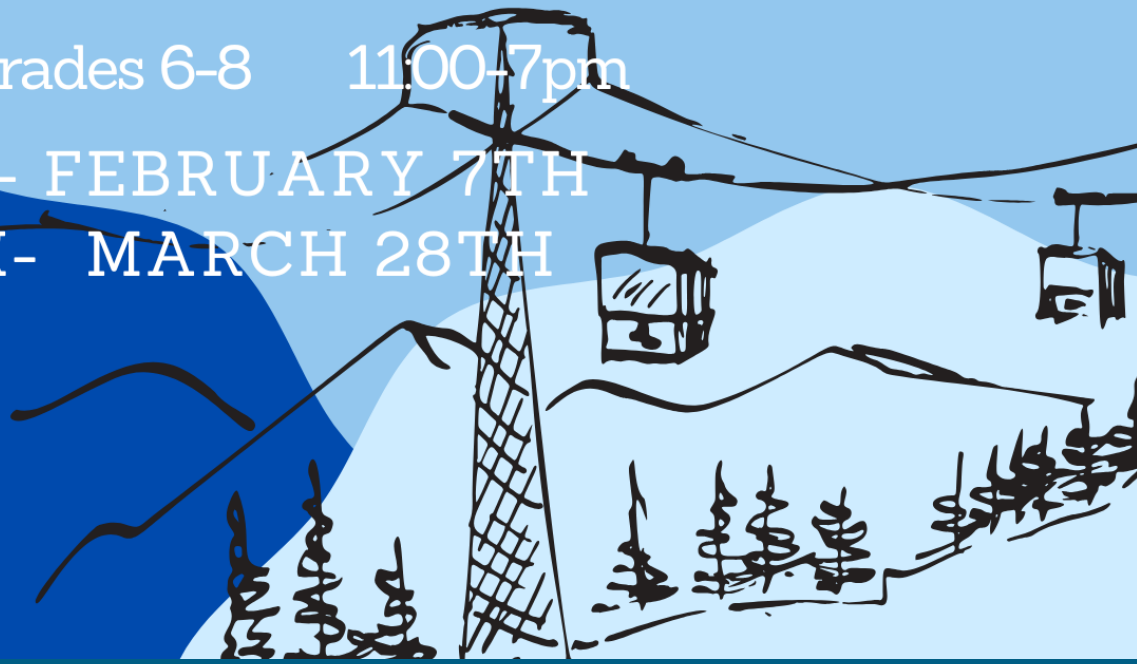
\$120/\$130. Grades 6-12 8am-5pm
WACHUSETTE- JANUARY 10TH

Early Release Days

When school is dismissed we're hoping on a coach bus and headed to the mountain. Lift ticket, transportation, and supervision provided. Bring money for food.

\$95/\$105. Grades 6-8 11:00-7pm

GUNSTOCK- FEBRUARY 7TH
PAT'S PEAK- MARCH 28TH



YOUTH PROGRAMS

February Vacation

Boda Borg

Meet at the NYS Spot, and we'll be headed to Boda Borg for the afternoon of interactive challenges. Pack a lunch

LOCATION: NYS Spot
GRADES: 6-8
DATE: Feb 18
DAY: Tue
TIME: 9:00-3:00pm
FEES (M/ NM): \$65/ \$75

Apex

Meet at the NYS Spot, and we'll be headed to Apex entertainment in Marlboro, MA for a day of bowling, pizza, laser tag and ropes course!

LOCATION: NYS Spot
GRADES: 6-8
DATE: Feb 19
DAY: Wed
TIME: 9:00-3:00pm
FEES (M/ NM): \$65/ \$75

Thrifting

We're headed to a number of thrift shops to hunt for some vintage finds. Who knows what treasure's we'll find! After some shopping we'll take a break and stop for some lunch, included in the program.

LOCATION: NYS Spot
INSTRUCTOR:
GRADES: 6-8
DATE: Feb 20
DAY: Thu
TIME: 9:00-3:00pm
FEES (M/ NM): \$55/ \$65

Dungeons & Dragons

WINTER D&D

Whether you've spent hours rolling dice and adventuring or are not even sure what D&D is, this program is perfect for you! D&D Campaigns are a collaborative improvisational role-playing game where players create characters, adventure, roll dice and work together to have as much fun as humanly possible. Join us each week for fantasy adventures in the world's greatest role-playing game.

LOCATION: NYS Spot
INSTRUCTOR: Tarah
GRADES: 6-8
DATE: Mar 7- Apr 11
DAY: Fri
TIME: 3:30-5:00pm
FEES (M/ NM): \$55/ \$65



YOUTH PROGRAMS

THE NYS SPOT
AT 64 PURCHASE ST

January 2025

TUESDAY

WEDNESDAY

THURSDAY

FRIDAY

1
CLOSED
New Year's Day

2
Gingerbread Cake
Pops

3
Classic Cards: B.S.

7
Name That Tune

8
Switch/Wii
Gaming

9
Finger Knitting

10
CLOSED
Staff Development

14
DIY Notebooks

15
The Newly Friend
Game

16
DIY Hair Bows

17
Classic Cards:
Rummy

21
Assassin

22
Scavenger Hunt

23
Nail Painting
Party

24
Classic Cards:
President

28
Minute To Win It

29
Friendship
Bracelets

30
Chocolate Bark

31
Classic Cards:
Spit





NEWBURYPORT
RECREATION
AND YOUTH
SERVICES